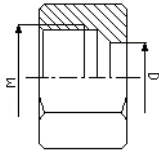


ELEMENTY ZŁĄCZNE WG DIN i PN

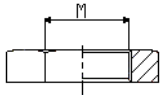
M



Ciśnienie wg PN	Rura D [mm]	Gwint [M]	Oznaczenie M
LL PN 100	4	8x1	M 4LL
	6	10x1	M 6LL
	8	10x1	M 8LL
L PN 315	6	12x1,5	M 6LL
	8	14x1,5	M 8LL
	10	16x1,5	M 10L
	12	18x1,5	M 12L
	15	22x1,5	M 15L
	16	22x1,5	M 16L
	18	26x1,5	M 18L
PN 160	18	27x2	M 18L M27x2
	22	30x2	M 22L
	28	36x2	M 28L
	35	45x2	M 35L
	42	52x2	M 42L

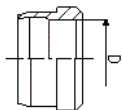
S PN 630	6	14x1,5	M 6S
	8	16x1,5	M 8S
	10	18x1,5	M 10S
	12	20x1,5	M 12S
	14	22x1,5	M 14S
PN 400	16	24x1,5	M 16S
	20	30x2	M 20S
	25	36x2	M 25S
	30	42x2	M 30S
PN 315	38	52x2	M 38S

GM



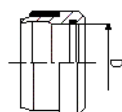
Ciśnienie wg PN	Rura D [mm]	Gwint [M]	Oznaczenie GM
	6	12x1,5	GM 6L
	8/6	14x1,5	GM 8L/6S
	10/8	16x1,5	GM 10L/8S
	12/10	18x1,5	GM 12L/10S
	12	20x1,5	GM 12S
	15/14	22x1,5	GM 15L/14S
	16	24x1,5	GM 16S
	18	26x1,5	GM 18L
	18	27x2	GM 18L 27x2
	22/20	30x2	GM 22L/20S
		33x2	GM 33x2
	28/25	36x2	GM 28L/25S
	30	42x2	GM 30S
	35	45x2	GM 35L
		48x2	GM 48x2
	42/38	52x2	GM 42L/38S

DPR



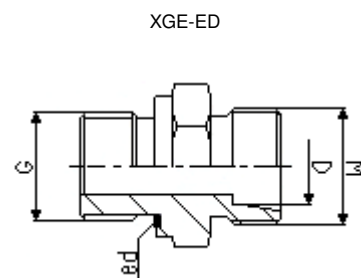
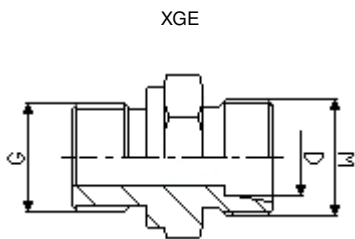
Ciśnienie wg PN	Rura D [mm]	Gwint [M]	Oznaczenie DPR	Oznaczenie DPR
LL PN 100	4		DPR 4LL	
	6		DPR 6LL	
	8		DPR 8LL	
L/S PN 630	6		DPR 6LL	DPR B4 6L/S
	8		DPR 8LL	DPR B4 8L/S
	10		DPR 10L	DPR B4 10L/S
	12		DPR 12L	DPR B4 12L/S
L PN 315	15		DPR 15L	DPR B4 15L
	18		DPR 18L	DPR B4 18L
PN 160	22		DPR 22L	DPR B4 22L
	28		DPR 28L	DPR B4 28L
	35		DPR 35L	DPR B4 35L
	42		DPR 42L	DPR B4 42L

DPR B4



S PN 630	6		DPR 6L/S	DPR B4 6L/S
	8		DPR 8L/S	DPR B4 8L/S
	10		DPR 10L/S	DPR B4 10L/S
	12		DPR 12L/S	DPR B4 12L/S
	14		DPR 14S	DPR B4 14S
PN 400	16		DPR 16S	DPR B4 16S
	20		DPR 20S	DPR B4 20S
	25		DPR 25S	DPR B4 25S
	30		DPR 30S	DPR B4 30S
PN 315	38		DPR 38S	DPR B4 38S

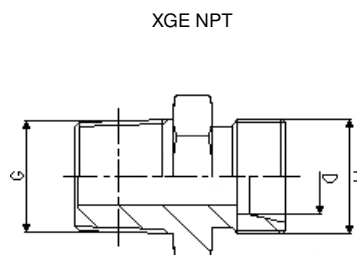
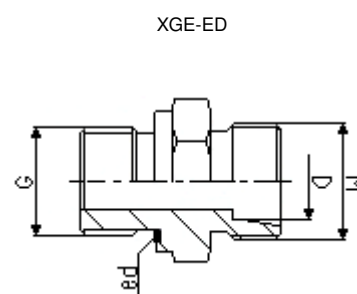
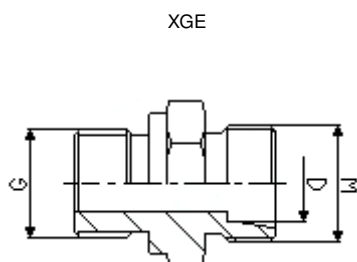
ELEMENTY ZŁĄCZNE WG DIN i PN



Ciśnienie wg PN	Rura [D] [mm]	Gwint [M]	Gwint [M2] po stronie rury	Oznaczenie XGE	Oznaczenie XGE-ED
LL PN 100	4	8x1	8x1		XGE 6LLM-ED
	6	10x1	10x1		XGE 8LLM-ED
	8	10x1	12x1		XGE 10LLM-ED
L PN 315	6	10x1	12x1,5	XGE 6LM	XGE 6LM-ED
	8	10x1	14x1,5	XGE 8LM 10x1	XGE 8LM 10x1 ED
	8	12x1,5	14x1,5	XGE 8LM	XGE 8LM-ED
	8	18x1,5	14x1,5	XGE 8LM 18x1,5	XGE 8LM 18x1,5 ED
	10	14x1,5	16x1,5	XGE 10LM	XGE 10LM-ED
	10	16x1,5	16x1,5	XGE 10LM 16x1,5	XGE 10LM 16x1,5 ED
	10	18x1,5	16x1,5	XGE 10LM 18x1,5	XGE 10LM 18x1,5 ED
	10	22x1,5	16x1,5	XGE 10LM 22x1,5	XGE 10LM 22x1,5 ED
	12	14x1,5	18x1,5	XGE 12LM 14x1,5	XGE 12LM 14x1,4 ED
	12	16x1,5	18x1,5	XGE 12LM	XGE 12LM-ED
	12	18x1,5	18x1,5	XGE 12LM 18x1,5	XGE 12LM 18x1,5 ED
	12	22x1,5	18x1,5	XGE 12LM 22x1,5	XGE 12LM 22x1,5 ED
	15	16x1,5	22x1,5	XGE 15LM 16x1,5	XGE 15LM 16x1,5 ED
	15	18x1,5	22x1,5	XGE 15LM	XGE 15LM-ED
	15	22x1,5	22x1,5	XGE 15LM 22x1,5	XGE 15LM 22x1,5 ED
	16	20x1,5	22x1,5	XGE 16LM	XGE 16LM-ED
	16	26x1,5	22x1,5	XGE 16LM26x1,5	XGE 16LM 26x1,5 ED
	16	27x2	22x1,5	XGE 16LM27x2	XGE 16LM 27x2 ED
	18	18x1,5	26x1,5	XGE 18LM18x1,5	XGE 18LM 18x1,5 ED
	18	22x1,5	26x1,5	XGE 18LM	XGE 18LM-ED
18	26x1,5	27x2	XGE18LM 26x1,5	XGE 18LM 26x1,5 ED	
18	27x2	27x2	XGE 18LM 27x2	XGE 18LM 27x2 ED	
18	33x2	27x2	XGE 18LM 33x2	XGE 18LM 33x2 ED	
L PN 160	22	22x1,5	30x2	XGE 22LM 22x1,5	XGE 22LM 22x1,5 ED
	22	26x1,5	30x2	XGE 22LM	XGE 22LM-ED
	22	33x2	30x2	XGE 22LM 33x2	XGE 22LM 33x2 ED
	28	33x2	36x2	XGE 28LM	XGE 28LM-ED
	35	42x2	45x2	XGE 35LM	XGE 35LM-ED
	42	48x2	52x2	XGE 42LM	XGE 42LM-ED

S PN 630	6	12x1,5	14x1,5	XGE 6SM	XGE 6SM-ED
	8	14x1,5	16x1,5	XGE 8SM	XGE 8SM-ED
	10	16x1,5	18x1,5	XGE 10SM	XGE 10SM-ED
	12	18x1,5	20x1,5	XGE 12SM	XGE 12SM-ED
	12	22x1,5	20x1,5	XGE 12SM22x1,5	
	14	20x1,5	22x1,5	XGE 14SM	XGE 14SM-ED
S PN 400	16	18x1,5	24x1,5	XGE 16SM18x1,5	
	16	22x1,5	24x1,5	XGE 16SM	XGE 16SM-ED
	16	27x2	24x1,5	XGE 16SM 27x2	XGE 16SM 27x2 ED
	16	33x2	24x1,5	XGE 16SM 233x2	XGE 16SM 33x2 ED
	20	22x1,5	30x2	XGE 20SM 22x1,5	XGE 20SM 22x1,5 ED
	20	27x2	30x2	XGE 20SM	XGE 20SM-ED
	20	33x2	30x2	XGE 20SM 33x2	XGE 20SM 33x2 ED
	20	42x2	30x2	XGE 20SM 42x2	XGE 20SM 42x2 ED
	25	27x2	36x2	XGE 25SM 27x2	XGE 25SM 27x2 ED
	25	33x2	36x2	XGE 25SM	XGE 25SM-ED
	25	42x2	36x2	XGE 25SM 42x2	XGE 25SM 42x2 ED
	30	33x2	42x2	XGE 30SM 33x2	XGE 30SM 33x2 ED
	30	42x2	42x2	XGE 30SM	XGE 30SM-ED
PN 315	38	48x2	52x2	XGE 38SM	XGE 38SM-ED

ELEMENTY ZŁĄCZNE WG DIN i PN

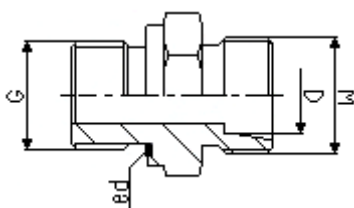


Ciśnienie wg PN	Rura [D] [mm]	Gwint [G]	Gwint [M] po stronie rury	Oznaczenie XGE	Oznaczenie XGE-ED	Oznaczenie XGE NPT
LL PN 100	4	1/8" keg	8x1	XGE 4LLR	XGE 4LLR-ED	XGE 4LL NPT
	6	1/8" keg	10x1	XGE 6LLR	XGE 6LLR-ED	XGE 6LL NPT
	8	1/8" keg	12x1	XGE 8LLR	XGE 8LLR-ED	XGE 8LL NPT
L PN 315	6	1/8"	12x1,5	XGE 6LR	XGE 6LR-ED	XGE 6L NPT
	6	1/4"	12x1,5	XGE 6LR 1/4"	XGE 6LR 1/4"-ED	XGE 6L 1/4" NPT
	6	3/8"	12,15	XGE 6LR 3/8"	XGE 6LR 3/8"-ED	XGE 6L 3/8" NPT
	8	1/8"	14x1,5	XGE 8LR 1/8"	XGE 8LR 1/8"-ED	XGE 8L 1/8" NPT
	8	1/4"	14x1,5	XGE 8LR	XGE 8LR-ED	XGE 8L NPT
	8	3/8"	14x1,5	XGE 8LR 3/8"	XGE 8LR 3/8"-ED	XGE 8L 3/8" NPT
	8	1/2"	14x1,5	XGE 8LR 1/2"	XGE 8LR 1/2"-ED	XGE 8L 1/2" NPT
	10	1/8"	16x1,5	XGE 10LR 1/8"	XGE 10LR 1/8"-ED	XGE 10L 1/8" NPT
	10	1/4"	16x1,5	XGE 10LR	XGE 10LR-ED	XGE 10L NPT
	10	3/8"	16x1,5	XGE 10LR 3/8"	XGE 10LR 3/8"-ED	XGE 10L 3/8" NPT
	10	1/2"	16x1,5	XGE 10LR 1/2"	XGE 10LR 1/2"-ED	XGE 10L 1/2" NPT
	12	1/4"	18x1,5	XGE 12LR 1/4"	XGE 12LR 1/4"-ED	XGE 12L 1/4" NPT
	12	3/8"	18x1,5	XGE 12LR 3/8"	XGE 12LR 3/8"-ED	XGE 12L 3/8" NPT
	12	1/2"	18x1,5	XGE 12LR 1/2"	XGE 12LR 1/2"-ED	XGE 12L 1/2" NPT
	12	3/4"	18x1,5	XGE 12LR 3/4"	XGE 12LR 3/4"-ED	XGE 12L 3/4" NPT
	15	3/8"	22x1,5	XGE 15LR 3/8"	XGE 15LR 3/8"-ED	XGE 15L 3/8" NPT
	15	1/2"	22x1,5	XGE 15LR	XGE 15LR-ED	XGE 15L NPT
	15	3/4"	22x1,5	XGE 15LR 3/4"	XGE 15LR 3/4"-ED	XGE 15L 1/2" NPT
	16	3/8"	22x1,5	XGE 16LR 3/8"	XGE 16LR 3/8" ED	
	16	1/2"	22x1,5	XGE 16LR	XGE 16LR-ED	
	16	3/4"	22x1,5	XGE 16LR 3/4"	XGE 16LR 3/4"-ED	
18	1/2"	26x1,5	XGE 18LR	XGE 18LR-ED	XGE 18L NPT	
18	3/4"	26x1,5	XGE 18LR 3/4"	XGE 18LR 3/4"-ED	XGE 18L 3/4" NPT	
18	1/2"	27x2	XGE 18LR PN	XGE 18LR-ED PN		
18	3/4"	27x2	XGE 18LR 3/4" PN	XGE 18LR 3/4"-ED PN		
L PN 160	22	1/2"	30x2	XGE 22LR 1/2"	XGE 22LR 1/2"-ED	XGE 22L 1/2" NPT
	22	3/4"	30x2	XGE 22LR	XGE 22LR-ED	XGE 22L NPT
	22	1"	30x2	XGE 22LR 1"	XGE 22LR 1"-ED	XGE 22L 1" NPT
	28	3/4"	36x2	XGE 28LR 3/4"	XGE 28LR 3/4"-ED	XGE 28L 3/4" NPT
	28	1"	36x2	XGE 28LR	XGE 28LR-ED	XGE 28L NPT
	28	1 1/4"	36x2	XGE 28LR 1 1/4"	XGE 28LR 1 1/4"-ED	XGE 28L 1 1/4" NPT
	35	1"	45x2	XGE 35LR 1"	XGE 35LR 1"-ED	XGE 35L 1" NPT
	35	1 1/4"	45x2	XGE 35LR	XGE 35LR-ED	XGE 35L NPT
	35	1 1/2"	45x2	XGE 35LR 1 1/2"	XGE 35LR 1 1/2"-ED	XGE 35L 1 1/2" NPT
	42	1 1/4"	52x2	XGE 42LR 1 1/4"	XGE 42LR 1 1/4"-ED	XGE 42L 1 1/4" NPT
42	1 1/2"	52x2	XGE 42LR	XGE 42LR-ED	XGE 42L NPT	
S PN630	6	1/4"	14x1,5	XGE 6SR	XGE 6SR-ED	XGE 6S NPT
	8	1/4"	16x1,5	XGE 8SR	XGE 8SR-ED	XGE 8S NPT
	8	3/8"	16x1,5	XGE 8SR 3/8"	XGE 8SR 3/8"-ED	XGE 8S 3/8" NPT
	10	1/4"	18x1,5	XGE 10SR 1/4"	XGE 10SR 1/4"-ED	XGE 10S 1/4" NPT
	10	3/8"	18x1,5	XGE 10SR	XGE 10SR -ED	XGE 10S NPT
	10	1/2"	18x1,5	XGE 10SR 1/2"	XGE 10SR 1/2"-ED	XGE 10S 1/2" NPT
	12	1/4"	20x1,5	XGE 12SR 1/4"	XGE 12SR 1/4"-ED	XGE 12S 1/4" NPT
	12	3/8"	20x1,5	XGE 12SR 3/8"	XGE 12SR 3/8"-ED	XGE 12S 3/8" NPT
	12	1/2"	20x1,5	XGE 12SR 1/2"	XGE 12SR 1/2"-ED	XGE 12S 1/2" NPT
	12	3/4"	20x1,5	XGE 12SR 3/4"	XGE 12SR 3/4"-ED	XGE 12S 3/4" NPT
	14	3/8"	22x1,5	XGE 14SR 3/8"	XGE 14SR 3/8"-ED	XGE 14S 3/8" NPT
	14	1/2"	22x1,5	XGE 14SR	XGE 14SR-ED	XGE 14S NPT
	16	3/8"	24x1,5	XGE 16 SR 3/8"	XGE 16SR 3/8"-ED	XGE 16S 3/8" NPT
	16	1/2"	24x1,5	XGE 16SR	XGE 16SR -ED	XGE 16S NPT
S PN400	16	3/4"	24x1,5	XGE 16SR 3/4"	XGE 16SR 3/4"-ED	XGE 16S 3/4" NPT
	20	1/2"	30x2	XGE 20SR 1/2"	XGE 20SR 1/2"-ED	XGE 20S 1/2" NPT
	20	3/4"	30x2	XGE 20SR	XGE 20SR-ED	XGE 20S NPT
	20	1"	30x2	XGE 20SR 1"	XGE 20SR 1"-ED	XGE 20S 1" NPT
	25	3/4"	36x2	XGE 25SR 3/4"	XGE 25SR 3/4"-ED	XGE 25S 3/4" NPT
	25	1"	36x2	XGE 25SR 1"	XGE 25SR-ED	XGE 25S NPT
	25	1 1/4"	36x2	XGE 25SR 1 1/4"	XGE 25SR 1 1/4"-ED	XGE 25S 1 1/4" NPT
	30	1"	42x2	XGE 30SR 1"	XGE 30SR 1"-ED	XGE 30S 1" NPT
	30	1 1/4"	42x2	XGE 30SR	XGE 30SR-ED	XGE 30S NPT
	30	1 1/2"	42x2	XGE 30SR 1 1/2"	XGE 30SR 1 1/2"-ED	XGE 30S 1 1/2" NPT
	S PN315	38	1 1/4"	52x2	XGE 38SR 1 1/4"	XGE 38SR 1 1/4"-ED
38		1 1/2"	52x2	XGE 38SR	XGE 38SR-ED	XGE 38S NPT

ELEMENTY ZŁĄCZNE WG DIN i PN

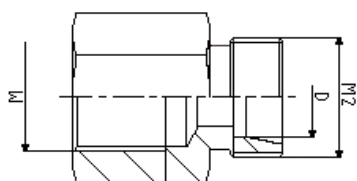
Ciśnienie wg PN	Rura [D] [mm]	Gwint [G]	Gwint [M] po stronie rury	Oznaczenie XGE UNF
L PN315	6	7/16"-20	12x1,5	XGE 6L 7/16" UNF
	8	1/2"-20	14x1,5	XGE 8L 1/2" UNF
	8	7/16"-20	14x1,5	XGE 8L 7/16" UNF
	10	1/2"-20	16x1,5	XGE 10L 1/2" UNF
	10	7/16"-20	16x1,5	XGE 10L 7/16" UNF
	12	9/16"-18	18x1,5	XGE 12L 9/16" UNF
	12	3/4"-16	18x1,5	XGE 12L 3/4" UNF
	12	7/8"-14	18x1,5	XGE 12L 7/8" UNF
	15	3/4"-16	22x1,5	XGE 15L 3/4" UNF
	15	7/8"-14	22x1,5	XGE 15L 7/8" UNF
L PN160	18	3/4"-16	26x1,5	XGE 18L 3/4" UNF
	18	7/8"-14	26x1,5	XGE 18L 7/8" UNF
	22	7/8"-14	30x2	XGE 22L 7/8" UNF
	22	1 1/16"-12	30x2	XGE 22L 1 1/16" UNF
	22	1 5/16"	30x2	XGE 22L 1 5/16" UNF
	28	1 1/16"-12	36x2	XGE 28L 1 1/16" UNF
	28	1 5/16"-12	36x2	XGE 28L 1 5/16" UNF
	35	1 5/16"-12	45x2	XGE 35L 1 5/16" UNF
	35	1 5/8"-12	45x2	XGE 35L 1 5/8" UNF
	42	1 5/8"-12	52x2	XGE 42L 1 5/8" UNF
42	1 7/8"-12	52x2	XGE 42L 1 7/8" UNF	

XGE UNF



S PN630	6	1/2"-20	14x1,5	XGE 6S 1/2" UNF
	8	7/16"-20	16x1,5	XGE 8S 7/16" UNF
	8	1/2"-20	16x1,5	XGE 8S 1/2" UNF
	10	9/16"-18	18x1,5	XGE 10S 9/16" UNF
	12	9/16"-18	20x1,5	XGE 12S 9/16" UNF
	12	3/4"-16	20x1,5	XGE 12S 3/4" UNF
S PN400	14	3/4"-16	22x1,5	XGE 14S 3/4" UNF
	16	3/4"-16	24x1,5	XGE 16S 2/4" UNF
	16	7/8"-14	24x1,5	XGE 16S 7/8" UNF
	20	3/4"-16	30x2	XGE 20S 3/4" UNF
	20	7/8"-14	30x2	XGE 20S 7/8" UNF
	20	1 1/16"-12	30x2	XGE 20S 1 1/16" UNF
	25	1 1/16"-12	36x2	XGE 25S 1 1/16" UNF
	25	1 5/16"-12	36x2	XGE 25S 1 5/16" UNF
S PN315	30	1 5/16"-12	42x2	XGE 30S 1 5/16" UNF
	30	1 5/8"-12	42x2	XGE 30S 1 5/8" UNF
	38	1 5/8"-12	52x2	XGE 38S 1 5/8" UNF
	38	1 7/8"-12	52x2	XGE 38S 1 7/8" UNF

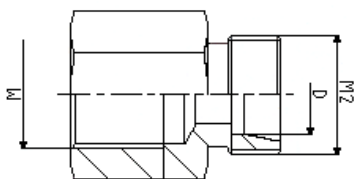
XGAi



Ciśnienie wg PN	Rura [D] [mm]	Gwint [M]	Gwint [M2] po stronie rury	Oznaczenie GAI
L PN 315	6	10x1	12x1,5	GAI 6LM
	8	12x1,5	14x1,5	GAI 8LM
	10	14x1,5	16x1,5	GAI 10LM
	12	16x1,5	18x1,5	GAI 12LM
	15	18x1,5	22x1,5	GAI 15LM
	18	22x1,5	26x1,5	GAI 18LM
L PN 160	22	26x1,5	30x2	GAI 22LM
	28	33x2	36x2	GAI 28LM
	35	42x2	45x2	GAI 35LM
	42	48x2	52x2	GAI 42LM
S PN 630	6	12x1,5	14x1,5	GAI 6SM
	8	14x1,5	16x1,5	GAI 8SM
	10	16x1,5	18x1,5	GAI 10SM
	12	18x1,5	20x1,5	GAI 12SM
	14	20x1,5	22x1,5	GAI 14SM
S PN 400	16	22x1,5	24x1,5	GAI 16SM
	20	27x2	30x2	GAI 20SM
	25	33x2	36x2	GAI 25SM
	30	42x2	42x2	GAI 30SM
PN 315	38	48x2	52x2	GAI 38SM

ELEMENTY ZŁĄCZNE WG DIN I PN

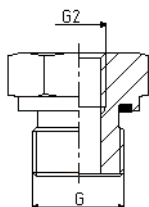
XGAi



Ciśnienie wg PN	Rura [D] [mm]	Gwint [G]	Gwint [M2] po stronie rury	Oznaczenie XGAi
L PN 315	6	1/8"	12x1,5	XGAi 6LR
	8	1/4"	14x1,5	XGAi 8LR
	10	1/4"	16x1,5	XGAi 10LR
	12	3/8"	18x1,5	XGAi 12LR
	15	1/2"	22x1,5	XGAi 15LR
L PN 160	18	1/2"	26x1,5	XGAi 18LR
	22	3/4"	30x2	XGAi 22LR
	28	1"	36x2	XGAi 28LR
	35	1 1/4"	45x2	XGAi 35LR
	42	1 1/2"	52x2	XGAi 42LR

S PN 630	6	1/4"	14x1,5	XGAi 6SR
	8	1/4"	16x1,5	XGAi 8SR
	10	3/8"	18x1,5	XGAi 10SR
	12	3/8"	20x1,5	XGAi 12SR
	14	1/2"	22x1,5	XGAi 14SR
S PN 400	16	1/2"	24x1,5	XGAi 16SR
	20	3/4"	30x2	XGAi 20SR
	25	1"	36x2	XGAi 25SR
	30	1 1/4"	42x2	XGAi 30SR
PN 315	38	1 1/2"	52x2	XGAi 38SR

Ri typ A



Ciśnienie wg PN	Gwint [G]	Gwint [G2]	Oznaczenie RI-ED typ A	Oznaczenie RI-ED typ B
630	1/8	1/4		RI 1/8EDx1/4
	1/8	3/8		RI 1/8EDx3/8
	1/4	1/8		RI 1/4EDx1/8
	1/4	3/8		RI 1/4EDx3/8
	1/4	1/2		RI 1/4EDx1/2
	1/4	3/4		RI 1/4EDx3/4
	3/8	1/8	RI 3/8EDx1/8	
	3/8	1/4		RI 3/8EDx1/4
	3/8	1/2		RI 3/8EDx1/2

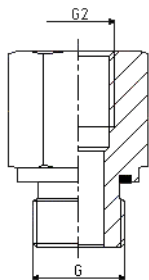
400	3/8	3/4		RI 3/8EDx3/4
-----	-----	-----	--	--------------

630	1/2	1/8	RI 1/2EDx1/8	
	1/2	1/4	RI 1/2EDx1/4	
	1/2	3/8		RI 1/2EDx3/8

400	1/2	3/4		RI 1/2EDx3/4
	1/2	1		RI 1/2EDx1
	1/2	1 1/4		RI 1/2EDx1 1/4
	3/4	1/4	RI 3/4EDx1/4	
	3/4	3/8	RI 3/4EDx3/8	
	3/4	1/2		RI 3/4EDx1/2
	3/4	1		RI 3/4EDx1
3/4	1 1/4		RI 3/4EDx1 1/4	

315	3/4	1 1/2		RI 3/4EDx1 1/2
-----	-----	-------	--	----------------

Ri typ B



400	1	1/4	RI 1EDx1/4	
	1	3/8	RI 1EDx3/8	
	1	1/2	RI 1EDx1/2	
	1	3/4		RI 1EDx3/4
	1	1 1/4		RI 1EDx1 1/4

315	1	1 1/2		RI 1EDx1 1/2
-----	---	-------	--	--------------

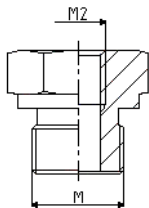
400	1 1/4	1/2	RI 1 1/4EDx1/2	
	1 1/4	3/4	RI 1 1/4EDx3/4	
	1 1/4	1		RI 1 1/4EDx1

315	1 1/4	1 1/2		RI 1 1/4EDx1 1/2
	1 1/2	1/2	RI 1 1/2EDx1/2	
	1 1/2	3/4	RI 1 1/2EDx3/4	
	1 1/2	1	RI 1 1/2EDx1	
1 1/2	1 1/4		RI 1 1/2EDx1 1/4	

250	2	1 1/2		RI 2EDx1 1/2
-----	---	-------	--	--------------

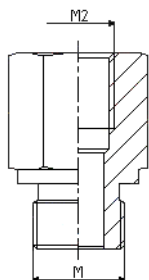
ELEMENTY ZŁĄCZNE WG DIN i PN

TULEJA REDUKCYJNA TYP A



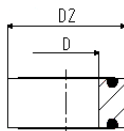
Ciśnienie wg PN	Gwint [M]	Gwint [M2]	Oznaczenie TULRED A	Oznaczenie TULRED B
L PN 315	14x1,5	12x1,5		TULRED 16-8/6
	16x1,5	12x1,5		TULRED 16-10/6
	16x1,5	14x1,5		TULRED 16-10/8
	18x1,5	14x1,5	TULRED 18/14	
	18x1,5	16x1,5		TULRED 18/16
	20x1,5	14x1,5	TULRED 16-13/8	
	20x1,5	16x1,5		TULRED 16-13/10
	22x1,5	16x1,5	TULRED 16-16/10	
	22x1,5	18x1,5		TULRED 22/18
	22x1,5	20x1,5		TULRED 16-16/13
	26x1,5	18x1,5	TULRED 26/18	
	26x1,5	20x1,5	TULRED 26/20	
	26x1,5	22x1,5		TULRED 26/22
L PN 160	27x2	18x1,5	TULRED 27/18	
	27x2	20x1,5	TULRED 16-20/13	
	27x2	22x1,5		TULRED 16-20/16
	33x2	22x1,5	TULRED 16-25/16	
	33x2	26x1,5		TULRED 33/26
	33x2	27x2		TULRED 16-25/20
	42x2	26x1,5	TULRED 42/26	
	42x2	27x2	TULRED 16-32/20	
	42x2	33x2		TULRED 16-32/25
	48x2	33x2	TULRED 16-40/25	
	48x2	42x2		TULRED 16-40/32

TULEJA REDUKCYJNA TYP B



S PN 630	16x1,5	14x1,5		TULRED 32-6/4
	18x1,5	14x1,5		TULRED 18/14
	20x1,5	14x1,5		TULRED 32-8/4
	18x1,5	16x1,5		TULRED 18/16
	20x1,5	16x1,5		TULRED 32-8/6
	22x1,5	16x1,5		TULRED 32-10/6
	22x1,5	18x1,5		TULRED 22/18
S PN 400	22x1,5	20x1,5		TULRED 32-10/8
	27x2	18x1,5		TULRED 27/18
	27x2	20x1,5		TULRED 32-13/8
	27x2	22x1,5		TULRED 32-13/10
	33x2	22x1,5		TULRED 32-16/10
	33x2	27x2		TULRED 32-16/13
	42x2	27x2		TULRED 32-20/13
	42x2	33x2		TULRED 32-20/16
	48x2	33x2		TULRED 32-25/16
	48x2	42x2		TULRED 32-25/20

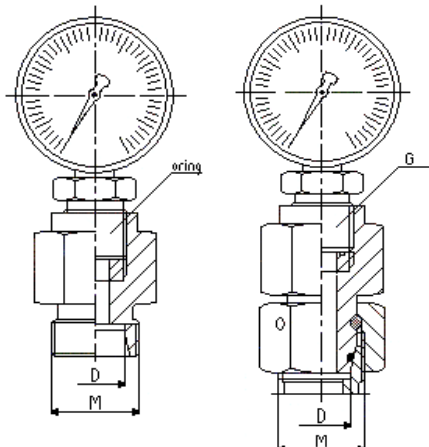
DKZ



Ciśnienie wg PN	[D]	[D2]	Gwint [G]	Oznaczenie DKZ
	6	11	1/4	DKZ 1/4
	9	18	1/2	DKZ 1/2

XMAV

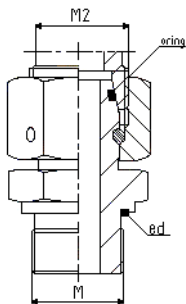
MAV-EV



Ciśnienie wg PN	Rura [D] [mm]	Gwint [M]	Gwint [G]	Oznaczenie XMAV	Oznaczenie MAV-EV
L 315	6	12x1,5	1/4	XMAV 6LR	MAV-EV 6LR
	8	14x1,5	1/4	XMAV 8LR	MAV-EV 8LR
	10	16x1,5	1/4	XMAV 10LR	MAV-EV 10LR
	12	18x1,5	1/4	XMAV 12LR	MAV-EV 12LR
S 630	6	14x1,5	1/2	XMAV 6SR	MAV-EV 6SR
	8	16x1,5	1/2	XMAV 8SR	MAV-EV 8SR
	10	18x1,5	1/2	XMAV 10SR	MAV-EV 10SR
	12	20x1,5	1/2	XMAV 12SR	MAV-EV 12SR

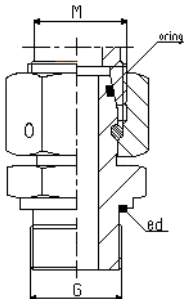
ELEMENTY ZŁĄCZNE WG DIN i PN

EGE-ED



Ciśnienie wg PN	Rura [mm]	Gwint [M]	Gwint [M2] po stronie rury	Oznaczenie EGE-ED
L PN 315	6	10x1	12x1,5	EGE-ED 6LM
	8	12x1,5	14x1,5	EGE-ED 8LM
	10	14x1,5	16x1,5	EGE-ED 10LM
	12	16x1,5	18x1,5	EGE-ED 12LM
	15	18x1,5	22x1,5	EGE-ED 15LM
	18	22x1,5	26x1,5	EGE-ED 18LM
L PN 160	22	26x1,5	30x2	EGE-ED 22LM
	28	33x2	36x2	EGE-ED 28LM
	35	42x2	45x2	EGE-ED 35LM
	42	48x2	52x2	EGE-ED 42LM

EGE-ED

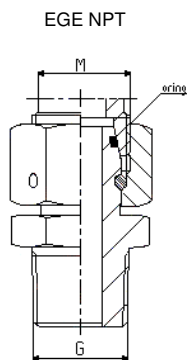


S PN 630	6	12x1,5	14x1,5	EGE-ED 6SM
	8	14x1,5	16x1,5	EGE-ED 8SM
	10	16x1,5	18x1,5	EGE-ED 10SM
	12	18x1,5	20x1,5	EGE-ED 12SM
	14	20x1,5	22x1,5	EGE-ED 14SM
S PN 400	16	22x1,5	24x1,5	EGE-ED 16SM
	20	27x2	30x2	EGE-ED 20SM
	25	33x2	36x2	EGE-ED 25SM
	30	42x2	42x2	EGE-ED 30SM
PN 315	38	52x2	52x2	EGE-EG 38SM

Ciśnienie wg PN	Rura [mm]	Gwint [G]	Gwint [M] po stronie rury	Oznaczenie EGE-ED	
L 315	6	1/8	12x1,5	EGE-ED 6LR	
	6	1/4	12x1,5	EGE-ED 6LR 1/4	
	8	1/8	14x1,5	EGE-ED 8LR 1/8	
	8	1/4	14x1,5	EGE-ED 8LR	
	8	3/8	14x1,5	EGE-ED 8LR 3/8	
	10	1/4	16x1,5	EGE-ED 10LR	
	10	3/8	16x1,5	EGE-ED 10LR 3/8	
	10	1/2	16x1,5	EGE-ED 10LR 1/2	
	12	1/4	18x1,5	EGE-ED 12LR 1/4	
	12	3/8	18x1,5	EGE-ED 12LR	
	12	1/2	18x1,5	EGE-ED 12LR 1/2	
	15	3/8	22x1,5	EGE-ED 15LR 3/8	
	15	1/2	22x1,5	EGE-ED 15LR	
	15	3/4	22x1,5	EGE-ED 15LR 3/4	
	18	1/2	26x1,5	EGE-ED 18LR	
	18	3/4	26x1,5	EGE-ED 18LR 3/4	
	L 160	22	1/2	30x2	EGE-ED 22LR 1/2
		22	3/4	30x2	EGE-ED 22LR
22		1	30x2	EGE-ED 22LR 1	
28		3/4	36x2	EGE-ED 28LR 3/4	
28		1	36x2	EGE-ED 28LR	
28		1 1/4	36x2	EGE-ED 28LR 1 1/4	
35		1	45x2	EGE-ED 35LR 1	
35		1 1/4	45x2	EGE-ED 35LR	
35		1 1/2	45x2	EGE-ED 35LR 1 1/2	
42		1 1/4	52x2	EGE-ED 42LR 1 1/4	
42		1 1/2	52x2	EGE-ED 42LR	

S 630	6	1/8	14x1,5	EGE-ED 6SR 1/8
	6	1/4	14x1,5	EGE-ED 6SR
	8	1/8	16x1,5	EGE-ED 8SR 1/8
	8	1/4	16x1,5	EGE-ED 8SR
	8	3/8	16x1,5	EGE-ED 8SR 3/8
	10	1/4	18x1,5	EGE-ED 10SR 1/4
	10	3/8	18x1,5	EGE-ED 10SR
	10	1/2	18x1,5	EGE-ED 10SR 1/2
	12	1/4	20x1,5	EGE-ED 12SR 1/4
	12	3/8	20x1,5	EGE-ED 12SR
	12	1/2	20x1,5	EGE-ED 12SR 1/2
	14	3/8	22x1,5	EGE-ED 14SR 3/8
	14	1/2	22x1,5	EGE-ED 14SR
	S 400	16	3/8	24x1,5
16		1/2	24x1,5	EGE-ED 16SR
16		3/4	24x1,5	EGE-ED 16SR 3/4
20		1/2	30x2	EGE-ED 20SR 1/2
20		3/4	30x2	EGE-ED 20SR
20		1	30x2	EGE-ED 20SR 1
25		3/4	36x2	EGE-ED 25SR 3/4
25		1	36x2	EGE-ED 25SR
25		1 1/4	36x2	EGE-ED 25SR 1 1/4
30		1	42x2	EGE-ED 30SR 1
30		1 1/4	42x2	EGE-ED 30SR
30		1 1/2	42x2	EGE-ED 30SR 1 1/2
S 315	38	1 1/4	52x2	EGE-ED 38SR 1 1/4
	38	1 1/2	52x2	EGE-ED 38SR

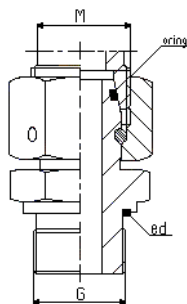
ELEMENTY ZŁĄCZNE WG DIN i PN



Ciśnienie wg PN	Rura [mm]	Gwint [G]	Gwint [M] po stronie rury	Oznaczenie EGE-ED NPT
L 315	6	1/8	12x1,5	EGE-ED 6L NPT
	6	1/4	12x1,5	EGE-ED 6L 1/4NPT
	8	1/8	14x1,5	EGE-ED 8L 1/8NPT
	8	1/4	14x1,5	EGE-ED 8L NPT
	8	3/8	14x1,5	EGE-ED 8L 3/8NPT
	10	1/4	16x1,5	EGE-ED 10L NPT
	10	3/8	16x1,5	EGE-ED 10L NPT 3/8
	10	1/2	16x1,5	EGE-ED 10L NPT 1/2
	12	1/4	18x1,5	EGE-ED 12L NPT 1/4
	12	3/8	18x1,5	EGE-ED 12L NPT
	12	1/2	18x1,5	EGE-ED 12L NPT 1/2
	15	3/8	22x1,5	EGE-ED 15L NPT 3/8
	15	1/2	22x1,5	EGE-ED 15L NPT
	15	3/4	22x1,5	EGE-ED 15L NPT 3/4
	18	1/2	26x1,5	EGE-ED 18L NPT
	18	3/4	26x1,5	EGE-ED 18L NPT 3/4
L 160	22	1/2	30x2	EGE-ED 22L NPT 1/2
	22	3/4	30x2	EGE-ED 22L NPT
	22	1	30x2	EGE-ED 22L NPT 1
	28	3/4	36x2	EGE-ED 28L NPT 3/4
	28	1	36x2	EGE-ED 28L NPT
	28	1 1/4	36x2	EGE-ED 28L NPT 1 1/4
	35	1	45x2	EGE-ED 35L NPT 1
	35	1 1/4	45x2	EGE-ED 35L NPT
	35	1 1/2	45x2	EGE-ED 35L NPT 1 1/2
	42	1 1/4	52x2	EGE-ED 42L NPT 1 1/4
42	1 1/2	52x2	EGE-ED 42L NPT	
S 630	6	1/8	14x1,5	EGE-ED 6S NPT 1/8
	6	1/4	14x1,5	EGE-ED 6S NPT
	8	1/8	16x1,5	EGE-ED 8S NPT 1/8
	8	1/4	16x1,5	EGE-ED 8S NPT
	8	3/8	16x1,5	EGE-ED 8S NPT 3/8
	10	1/4	18x1,5	EGE-ED 10S NPT 1/4
	10	3/8	18x1,5	EGE-ED 10S NPT
	10	1/2	18x1,5	EGE-ED 10S NPT 1/2
	12	1/4	20x1,5	EGE-ED 12S NPT 1/4
	12	3/8	20x1,5	EGE-ED 12S NPT
	12	1/2	20x1,5	EGE-ED 12S NPT 1/2
	14	3/8	22x1,5	EGE-ED 14S NPT 3/8
	14	1/2	22x1,5	EGE-ED 14S NPT
	S 400	16	3/8	24x1,5
16		1/2	24x1,5	EGE-ED 16S NPT
16		3/4	24x1,5	EGE-ED 16S NPT 3/4
20		1/2	30x2	EGE-ED 20S NPT 1/2
20		3/4	30x2	EGE-ED 20S NPT
20		1	30x2	EGE-ED 20S NPT 1
25		3/4	36x2	EGE-ED 25S NPT 3/4
25		1	36x2	EGE-ED 25S NPT
25		1 1/4	36x2	EGE-ED 25S NPT 1 1/4
30		1	42x2	EGE-ED 30S NPT 1
30		1 1/4	42x2	EGE-ED 30S NPT
30		1 1/2	42x2	EGE-ED 30S NPT 1 1/2
S 315		38	1 1/4	52x2
	38	1 1/2	52x2	EGE-ED 38S NPT

ELEMENTY ZŁĄCZNE WG DIN I PN

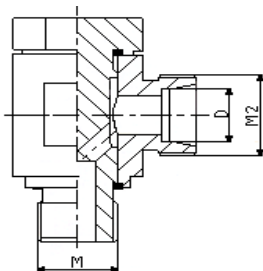
EGE-ED UNF



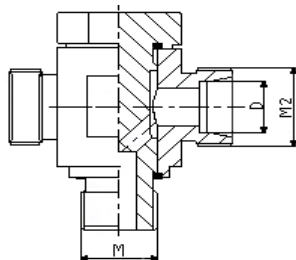
Ciśnienie wg PN	Rura [D] [mm]	Gwint [G]	Gwint [M] po stronie rury	Oznaczenie EGE-ED UNF
L PN315	6	7/16"-20	12x1,5	EGE 6L 7/16" UNF
	8	1/2"-20	14x1,5	EGE 8L 1/2" UNF
	8	7/16"-20	14x1,5	EGE 8L 7/16" UNF
	10	1/2"-20	16x1,5	EGE 10L 1/2" UNF
	10	7/16"-20	16x1,5	EGE 10L 7/16" UNF
	12	9/16"-18	18x1,5	EGE 12L 9/16" UNF
	12	3/4"-16	18x1,5	EGE 12L 3/4" UNF
	12	7/8"-14	18x1,5	EGE 12L 7/8" UNF
	15	3/4"-16	22x1,5	EGE 15L 3/4" UNF
	15	7/8"-14	22x1,5	EGE 15L 7/8" UNF
L PN160	18	3/4"-16	26x1,5	EGE 18L 3/4" UNF
	18	7/8"-14	26x1,5	EGE 18L 7/8" UNF
	22	7/8"-14	30x2	EGE 22L 7/8" UNF
	22	1 1/16"-12	30x2	EGE 22L 1 1/16" UNF
	22	1 5/16"	30x2	EGE 22L 1 5/16" UNF
	28	1 1/16"-12	36x2	EGE 28L 1 1/16" UNF
	28	1 5/16"-12	36x2	EGE 28L 1 5/16" UNF
	35	1 5/16"-12	45x2	EGE 35L 1 5/16" UNF
	35	1 5/8"-12	45x2	EGE 35L 1 5/8" UNF
	42	1 5/8"-12	52x2	EGE 42L 1 5/8" UNF
	42	1 7/8"-12	52x2	EGE 42L 1 7/8" UNF

S PN630	6	1/2"-20	14x1,5	EGE 6S 1/2" UNF
	8	7/16"-20	16x1,5	EGE 8S 7/16" UNF
	8	1/2"-20	16x1,5	EGE 8S 1/2" UNF
	10	9/16"-18	18x1,5	EGE 10S 9/16" UNF
	12	9/16"-18	20x1,5	EGE 12S 9/16" UNF
	12	3/4"-16	20x1,5	EGE 12S 3/4" UNF
S PN400	14	3/4"-16	22x1,5	EGE 14S 3/4" UNF
	16	3/4"-16	24x1,5	EGE 16S 2/4" UNF
	16	7/8"-14	24x1,5	EGE 16S 7/8" UNF
	20	3/4"-16	30x2	EGE 20S 3/4" UNF
	20	7/8"-14	30x2	EGE 20S 7/8" UNF
	20	1 1/16"-12	30x2	EGE 20S 1 1/16" UNF
	25	1 1/16"-12	36x2	EGE 25S 1 1/16" UNF
	25	1 5/16"-12	36x2	EGE 25S 1 5/16" UNF
	30	1 5/16"-12	42x2	EGE 30S 1 5/16" UNF
	30	1 5/8"-12	42x2	EGE 30S 1 5/8" UNF
S PN315	38	1 5/8"-12	52x2	EGE 38S 1 5/8" UNF
	38	1 7/8"-12	52x2	EGE 38S 1 7/8" UNF

XWH



XTH

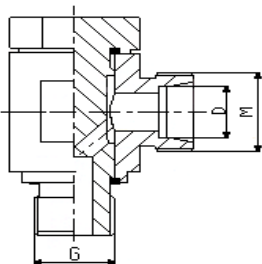


Ciśnienie wg PN	Rura [D] [mm]	Gwint [M]	Gwint [M2] po stronie rury	Oznaczenie XWH	Oznaczenie XTH
LL PN 100	4	8x1	8x1	XWH 4LLM	XTH 4LLM
	6	10x1	10x1	XWH 6LLM	XTH 6LLM
	8	10x1	12x1	XWH 8LLM	XTH 8LLM
L PN 315	6	10x1	12x1,5	XWH 6LM	XTH 6LM
	8	12x1,5	14x1,5	XWH 8LM	XTH 8LM
	10	14x1,5	16x1,5	XWH 10LM	XTH 10LM
	12	16x1,5	18x1,5	XWH 12LM	XTH 12LM
	15	18x1,5	22x1,5	XWH 15LM	XTH 15LM
	18	22x1,5	26x1,5	XWH 18LM	XTH 18LM
L PN160	22	26x1,5	30x2	XWH 22LM	XTH 22LM
	28	33x2	36x2	XWH 28LM	XTH 28LM
	35	42x2	45x2	XWH 35LM	XTH 35LM
	42	48x2	52x2	XWH 42LM	XTH 42LM

S PN 630	6	12x1,5	14x1,5	XWH 6SM	XTH 6SM
	8	14x1,5	16x1,5	XWH 8SM	XTH 8SM
	10	16x1,5	18x1,5	XWH 10SM	XTH 10SM
	12	18x1,5	20x1,5	XWH 12SM	XTH 12SM
	14	20x1,5	22x1,5	XWH 14SM	XTH 14SM
S PN 400	16	22x1,5	24x1,5	XWH 16SM	XTH 16SM
	20	27x2	30x2	XWH 20SM	XTH 20SM
	25	33x2	36x2	XWH 25SM	XTH 25SM
	30	42x2	42x2	XWH 30SM	XTH 30SM
PN 315	38	52x2	52x2	XWH 38SM	XTH 38SM

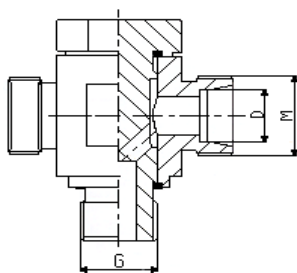
ELEMENTY ZŁĄCZNE WG DIN i PN

XWH



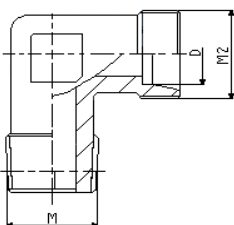
Ciśnienie wg PN	Rura [D] [mm]	Gwint [G]	Gwint [M] po stronie rury	Oznaczenie XWH	Oznaczenie XTH
LL PN 100	4	1/8"	8x1	XWH 4LLR	XTH 64LLR
	6	1/8"	10x1	XWH 6LLR	XTH 6LLR
	8	1/8"	12x1	XWH 8LLR	XTH 8LLR
L PN 315	6	1/8"	12x1,5	XWH 6LR	XTH 6LR
	8	1/4"	14x1,5	XWH 8LR	XTH 8LR
	10	1/4"	16x1,5	XWH 10LR	XTH 10LR
	12	3/8"	18x1,5	XWH 12LR	XTH 12LR
	15	1/2"	22x1,5	XWH 15LR	XTH 15LR
	18	1/2"	26x1,5	XWH 18LR	XTH 18LR
L PN160	22	3/4"	30x2	XWH 22LR	XTH 22LR
	28	1"	36x2	XWH 28LR	XTH 28LR
	35	1 1/4"	45x2	XWH 35LR	XTH 35LR
	42	1 1/2"	52x2	XWH 42LR	XTH 42LR

XTH



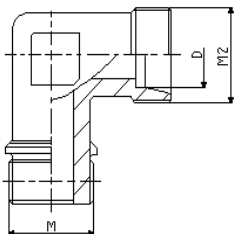
S PN 630	6	1/4"	14x1,5	XWH 6SR	XTH 6SR
	8	1/4"	16x1,5	XWH 8SR	XTH 8SR
	10	3/8"	18x1,5	XWH 10SR	XTH 10SR
	12	3/8"	20x1,5	XWH 12SR	XTH 12SR
	14	1/2"	22x1,5	XWH 14SR	XTH 14SR
S PN 400	16	1/2"	24x1,5	XWH 16SR	XTH 16SR
	20	3/4"	30x2	XWH 20SR	XTH 20SR
	25	1"	36x2	XWH 25SR	XTH 25SR
	30	1 1/4"	42x2	XWH 30SR	XTH 30SR
PN 315	38	1 1/2"	52x2	XWH 38SR	XTH 38SR

XWE MT



Ciśnienie wg PN	Rura [D] [mm]	Gwint [M]	Gwint [M2] po stronie rury	Oznaczenie XWE MT	Oznaczenie XWE MP
L 315	6	10x1	12x1,5	XWE 6LMT	
	8	12x1,5	14x1,5	XWE 8LMT	
	10	14x1,5	16x1,5	XWE 10LMT	
	12	16x1,5	18x1,5	XWE 12LMT	
	15	18x1,5	22x1,5	XWE 15LMT	
	18	22x1,5	26x1,5	XWE 18LMT	
L 160	22	26x1,5	30x2		XWE 22LMP
	28	33x2	36x2		XWE 28LMT
	35	42x2	45x2		XWE 35LMP
	42	48x2	52x2		XWE 42LMP

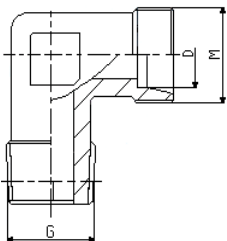
XWE MP



S 630	6	12x15	14x1,5	XWE 6SMT	
	8	14x1,5	16x1,5	XWE 8SMT	
	10	16x1,5	18x1,5	XWE 10SMT	
	12	16x1,5	20x1,5	XWE 12SMT	
	14	20x1,5	22x1,5	XWE 14SMT	
s 400	16	22x1,5	24x1,5	XWE 16SMT	
	20	27x2	30x2		XWE 20SMP
	25	33x2	36x2		XWE 25SMT
	30	42x2	42x2		XWE 30SMP
315	38	48x2	52x2		XWE 38SMP

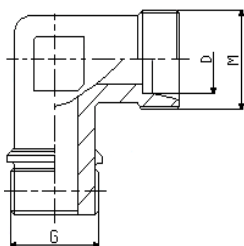
ELEMENTY ZŁĄCZNE WG DIN i PN

XWE BSPT / XWE NPT



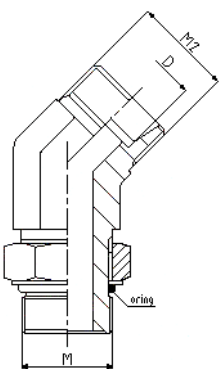
Ciśnienie wg PN	Rura [D] [mm]	Gwint [G]	Gwint [M] po stronie rury	Oznaczenie XWE BSPT	Oznaczenie XWE NPT	Oznaczenie XWE BSPP
LL PN 100	4	1/8"	8x1	XWE 4LL BSPT	XWE 4LL NPT	
	6	1/8"	10x1	XWE 6LL BSPT	XWE 6LL NPT	
	8	1/8"	12x1	XWE 8LL BSPT	XWE 8LL NPT	
L PN 315	6	1/8"	12x1,5	XWE 6L BSPT	XWE 6L NPT	
	6	1/4"	12x1,5	XWE 6L 1/4" BSPT	XWE 6L 1/4" NPT	
	8	1/8"	14x1,5	XWE 8L 1/8" BSPT	XWE 8L 1/8" NPT	
	8	1/4"	14x1,5	XWE 8L BSPT	XWE 8L NPT	
	8	3/8"	14x1,5	XWE 8L 3/8" BSPT	XWE 8L 3/8" NPT	
	8	1/2"	14x1,5	XWE 8L 1/2" BSPT	XWE 8L 1/2" NPT	
	10	1/8"	16x1,5	XWE 10L 1/8" BSPT	XWE 10L 1/8" NPT	
	10	1/4"	16x1,5	XWE 10L BSPT	XWE 10L NPT	
	10	3/8"	16x1,5	XWE 10L 3/8" BSPT	XWE 10L 3/8" NPT	
	10	1/2"	16x1,5	XWE 10L 1/2" BSPT	XWE 10L 1/2" NPT	
	12	1/4"	18x1,5	XWE 12L 1/4" BSPT	XWE 12L 1/4" NPT	
	12	3/8"	18x1,5	XWE 12L BSPT	XWE 12L NPT	
	12	1/2"	18x1,5	XWE 12L 1/2" BSPT	XWE 12L 1/2" NPT	
	15	3/8"	22x1,5	XWE 15L 3/8" BSPT	XWE 15L 3/8" NPT	
	15	1/2"	22x1,5	XWE 15L BSPT	XWE 15L NPT	
18	1/2"	26x1,5	XWE 18L BSPT	XWE 18L NPT		
18	3/4"	26x1,5	XWE 18L 3/4" BSPT	XWE 18L 3/4" NPT		
L PN 160	22	3/4"	30x2	XWE 22L BSPT	XWE 22L NPT	XWE 22L BSPP
	28	1"	36x2	XWE 28L BSPT	XWE 28L NPT	XWE 28L BSPP
	35	1 1/4"	45x2	XWE 35L BSPT	XWE 35L NPT	XWE 35L BSPP
	42	1 1/2"	52x2	XWE 42L BSPT	XWE 42L NPT	XWE 42L BSPP

XWE BSPP



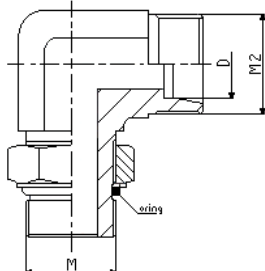
S PN 630	6	1/4"	14x1,5	XWE 6S BSPT	XWE 6S NPT	
	8	1/4"	16x1,5	XWE 8S BSPT	XWE 8S NPT	
	10	3/8"	18x1,5	XWE 10S BSPT	XWE 10S NPT	
	12	3/8"	20x1,5	XWE 12S BSPT	XWE 12S NPT	
	12	1/2"	20x1,5	XWE 12S 1/2" BSPT	XWE 12S 1/2" NPT	
	14	3/8"	22x1,5	XWE 14S 3/8" BSPT	XWE 14S 3/8" NPT	
S PN 400	14	1/2"	22x1,5	XWE 14S BSPT	XWE 14S NPT	
	16	3/8"	24x1,5	XWE 16S 3/8" BSPT	XWE 16S 3/8" NPT	
	16	1/2"	24x1,5	XWE 16S BSPT	XWE 16S NPT	
	20	1/2"	30x2	XWE 20S 1/2" BSPT	XWE 20S 1/2" NPT	
	20	3/4"	30x2	XWE 20S BSPT	XWE 20S NPT	XWE 20S BSPP
	25	3/4"	36x2	XWE 25S 3/4" BSPT	XWE 25S 3/4" NPT	
	25	1"	36x2	XWE 25S BSPT	XWE 25S NPT	XWE 25S BSPP
30	1"	42x2	XWE 30S 1" BSPT	XWE 30S 1" NPT		
30	1 1/4"	42x2	XWE 30S BSPT	XWE 30S NPT	XWE 30S BSPP	
PN 315	38	1 1/2"	52x2	XWE 38S BSPT	XWE 38S NPT	XWE 38S BSPP

XWEP 45



Ciśnienie wg PN	Rura [D] [mm]	Gwint [M]	Gwint [M2] po stronie rury	Oznaczenie XWEP 45	Oznaczenie XWEP 90
L 315	6	10x1	12x1,5	XWEP 45 6LM	XWEP 90 6LM
	8	12x1,5	14x1,5	XWEP 45 8LM	XWEP 90 8LM
	10	14x1,5	16x1,5	XWEP 45 10LM	XWEP 90 10LM
	12	16x1,5	18x1,5	XWEP 45 12LM	XWEP 90 12LM
	15	18x1,5	22x1,5	XWEP 45 15LM	XWEP 90 15LM
	16	20x1,5	22x1,5	XWEP 45 16LM	XWEP 90 16LM
	18	22x1,5	26x1,5	XWEP 45 18LM	XWEP 90 18LM
L 160	18	22x1,5	27x2	XWEP 45 18LM 27x2	XWEP 90 18LM 27x2
	22	27x2	30x2	XWEP 45 22LM	XWEP 90 22LM
	28	33x2	36x2	XWEP 45 28LM	XWEP 90 28LM
	35	42x2	45x2	XWEP 45 35LM	XWEP 90 35LM
	42	48x2	52x2	XWEP 45 42LM	XWEP 90 42LM

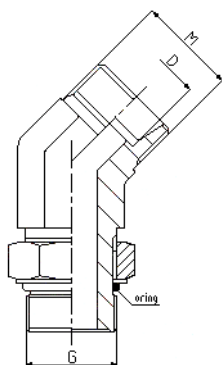
XWEP 90



S PN 630	6	12x1,5	14x1,5	XWEP 45 6SM	XWEP 90 6SM
	8	14x1,5	16x1,5	XWEP 45 8SM	XWEP 90 8SM
	10	16x1,5	18x1,5	XWEP 45 10SM	XWEP 90 10SM
	12	18x1,5	20x1,5	XWEP 45 12SM	XWEP 90 12SM
	14	20x1,5	22x1,5	XWEP 45 14SM	XWEP 90 14SM
S PN 400	16	22x1,5	24x1,5	XWEP 45 16SM	XWEP 90 16SM
	20	27x2	30x2	XWEP 45 20SM	XWEP 90 20SM
	25	33x2	36x2	XWEP 45 25SM	XWEP 90 25SM
	30	42x2	42x2	XWEP 45 30SM	XWEP 90 30SM
PN 315	38	48x2	52x2	XWEP 45 38SM	XWEP 90 38SM

ELEMENTY ZŁĄCZNE WG DIN I PN

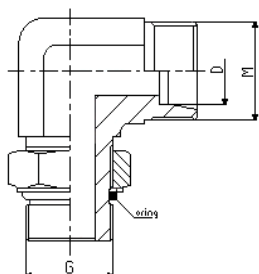
XWEP 45



Ciśnienie wg PN	Rura [D] [mm]	Gwint [G]	Gwint [M] po stronie rury	Oznaczenie XWEP 45	Oznaczenie XWEP 90
L 315	6	1/8	12x1,5	XWEP 45 6LR	XWEP 90 6LR
	8	1/4	14x1,5	XWEP 45 8LR	XWEP 90 8LR
	10	1/4	16x1,5	XWEP 45 10LR	XWEP 90 10LR
	12	3/8	18x1,5	XWEP 45 12LR	XWEP 90 12LR
	15	1/2	22x1,5	XWEP 45 15LR	XWEP 90 15LR
	16	1/2	22x1,5	XWEP 45 16LR	XWEP 90 16LR
	18	1/2	26x1,5	XWEP 45 18LR	XWEP 90 18LR
L 160	18	1/2	27x2	XWEP 45 18LR27/1/2	XWEP 90 18LR27/1/2
	22	3/4	30x2	XWEP 45 22LR	XWEP 90 22LR
	28	1	36x2	XWEP 45 28LR	XWEP 90 28LR
	35	1 1/4	45x2	XWEP 45 35LR	XWEP 90 35LR
	42	1 1/2	52x2	XWEP 45 42LR	XWEP 90 42LR

S PN 630	6	1/4	14x1,5	XWEP 45 6SR	XWEP 90 6SR
	8	1/4	16x1,5	XWEP 45 8SR	XWEP 90 8SR
	10	3/8	18x1,5	XWEP 45 10SR	XWEP 90 10SR
	12	3/8	20x1,5	XWEP 45 12SR	XWEP 90 12SR
	14	1/2	22x1,5	XWEP 45 14SR	XWEP 90 14SR
S PN 400	16	1/2	24x1,5	XWEP 45 16SR	XWEP 90 16SR
	20	3/4	30x2	XWEP 45 20SR	XWEP 90 20SR
	25	1	36x2	XWEP 45 25SR	XWEP 90 25SR
PN 315	30	1 1/4	42x2	XWEP 45 30SR	XWEP 90 30SR
	38	1 1/2	52x2	XWEP 45 38SR	XWEP 90 38SR

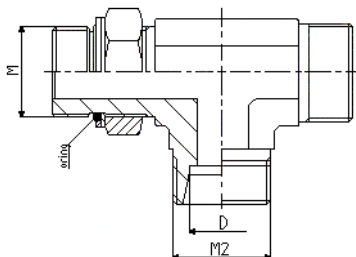
XWEP



Ciśnienie wg PN	Rura [D] [mm]	Gwint [G]	Gwint [M] po stronie rury	Oznaczenie XWEP 45	Oznaczenie XWEP 90
L 315	6	7/16-20	12x1,5	XWEP 45 6L UNF	XWEP 90 6L UNF
	8	7/16-20	14x1,5	XWEP 45 8L UNF	XWEP 90 8L UNF
	10	9/16-18	16x1,5	XWEP 45 10L UNF	XWEP 90 10L UNF
	12	3/4-16	18x1,5	XWEP 45 12L UNF	XWEP 90 12L UNF
	15	7/8-14	22x1,5	XWEP 45 15L UNF	XWEP 90 15L UNF
	18	7/8-14	26x1,5	XWEP 45 18L UNF	XWEP 90 18L UNF
	22	1 1/16-12	30x2	XWEP 45 22L UNF	XWEP 90 22L UNF
L 160	28	1 5/16-12	36x2	XWEP 45 28L UNF	XWEP 90 28L UNF
	35	1 5/8-12	45x2	XWEP 45 35L UNF	XWEP 90 35L UNF
	42	1 7/8-12	52x2	XWEP 45 42L UNF	XWEP 90 42L UNF

S PN 630	6	7/16-20	14x1,5	XWEP 45 6S UNF	XWEP 90 6S UNF
	8	9/16-18	16x1,5	XWEP 45 8S UNF	XWEP 90 8S UNF
	10	9/16-18	18x1,5	XWEP 45 10S UNF	XWEP 90 10S UNF
	12	3/4-16	20x1,5	XWEP 45 12S UNF	XWEP 90 12S UNF
	14	7/8-14	22x1,5	XWEP 45 14S UNF	XWEP 90 14S UNF
S PN 400	16	7/8-14	24x1,5	XWEP 45 16S UNF	XWEP 90 16S UNF
	20	1 1/16-12	30x2	XWEP 45 20S UNF	XWEP 90 20S UNF
	25	1 5/16-12	36x2	XWEP 45 25S UNF	XWEP 90 25S UNF
PN 315	30	1 5/8-12	42x2	XWEP 45 30S UNF	XWEP 90 30S UNF
	38	1 7/8-12	52x2	XWEP 45 38S UNF	XWEP 90 38S UNF

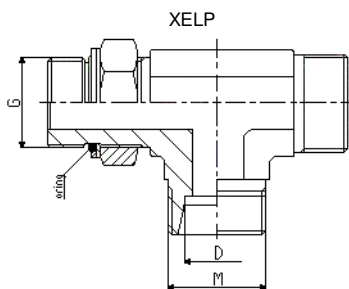
XELP



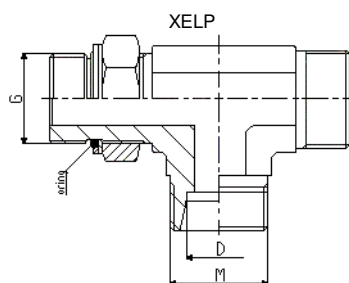
Ciśnienie wg PN	Rura [D] [mm]	Gwint [M]	Gwint [M2] po stronie rury	Oznaczenie XELP 90
L 315	6	10x1	12x1,5	XELP 90 6LM
	8	12x1,5	14x1,5	XELP 90 8LM
	10	14x1,5	16x1,5	XELP 90 10LM
	12	16x1,5	18x1,5	XELP 90 12LM
	15	18x1,5	22x1,5	XELP 90 15LM
	16	20x1,5	22x1,5	XELP 90 16LM
	18	22x1,5	26x1,5	XELP 90 18EL
	18	22x1,5	27x2	XELP 90 18LM 27x2
L 160	22	27x2	30x2	XELP 90 22LM
	28	33x2	36x2	XELP 90 28LM
	35	42x2	45x2	XELP 90 35LM
	42	48x2	52x2	XELP 90 42LM

S PN 630	6	12x1,5	14x1,5	XELP 90 6SM
	8	14x1,5	16x1,5	XELP 90 8SM
	10	16x1,5	18x1,5	XELP 90 10SM
	12	18x1,5	20x1,5	XELP 90 12SM
	14	20x1,5	22x1,5	XELP 90 14SM
S PN 400	16	22x1,5	24x1,5	XELP 90 16SM
	20	27x2	30x2	XELP 90 20SM
	25	33x2	36x2	XELP 90 25SM
PN 315	30	42x2	42x2	XELP 90 30SM
	38	48x2	52x2	XELP 90 38SM

ELEMENTY ZŁĄCZNE WG DIN i PN



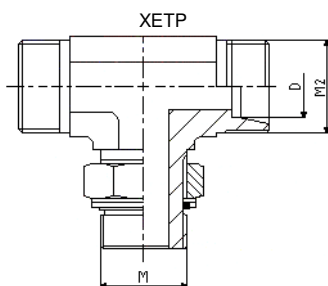
Ciśnienie wg PN	Rura [D] [mm]	Gwint [G]	Gwint [M] po stronie rury	Oznaczenie XELP 90
L 315	6	1/8	12x1,5	XELP 90 6LR
	8	1/4	14x1,5	XELP 90 8LR
	10	1/4	16x1,5	XELP 90 10LR
	12	3/8	18x1,5	XELP 90 12LR
	15	1/2	22x1,5	XELP 90 15LR
	16	1/2	22x1,5	XELP 90 16LR
	18	1/2	26x1,5	XELP 90 18LR
L 160	18	1/2	27x2	XELP 90 18LR27/1/2
	22	3/4	30x2	XELP 90 22LR
	28	1	36x2	XELP 90 28LR
	35	1 1/4	45x2	XELP 90 35LR
	42	1 1/2	52x2	XELP 90 42LR



S PN 630	6	1/4	14x1,5	XELP 90 6SR
	8	1/4	16x1,5	XELP 90 8SR
	10	3/8	18x1,5	XELP 90 10EL
	12	3/8	20x1,5	XELP 90 12SR
	14	1/2	22x1,5	XELP 90 14SR
S PN 400	16	1/2	24x1,5	XELP 90 16SR
	20	3/4	30x2	XELP 90 20SR
	25	1	36x2	XELP 90 25SR
PN 315	30	1 1/4	42x2	XELP 90 30SR
	38	1 1/2	52x2	XELP 90 38SR

Ciśnienie wg PN	Rura [D] [mm]	Gwint [G]	Gwint [M] po stronie rury	Oznaczenie XELP 90
L 315	6	7/16-20	12x1,5	XELP 90 6L UNF
	8	7/16-20	14x1,5	XELP 90 8L UNF
	10	9/16-18	16x1,5	XELP 90 10L UNF
	12	3/4-16	18x1,5	XELP 90 12L UNF
	15	7/8-14	22x1,5	XELP 90 15L UNF
	18	7/8-14	26x1,5	XELP 90 18L UNF
L 160	22	1 1/16-12	30x2	XELP 90 22L UNF
	28	1 5/16-12	36x2	XELP 90 28L UNF
	35	1 5/8-12	45x2	XELP 90 35L UNF
	42	1 7/8-12	52x2	XELP 90 42L UNF

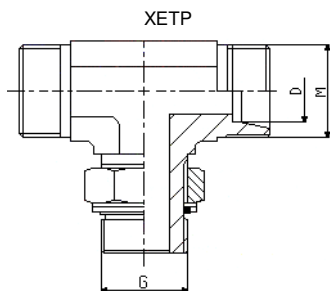
S PN 630	6	7/16-20	14x1,5	XELP 90 6S UNF
	8	9/16-18	16x1,5	XELP 90 8S UNF
	10	9/16-18	18x1,5	XELP 90 10S UNF
	12	3/4-16	20x1,5	XELP 90 12S UNF
S PN 400	14	7/8-14	22x1,5	XELP 90 14S UNF
	16	7/8-14	24x1,5	XELP 90 16S UNF
	20	1 1/16-12	30x2	XELP 90 20S UNF
PN 315	25	1 5/16-12	36x2	XELP 90 25S UNF
	30	1 5/8-12	42x2	XELP 90 30S UNF
	38	1 7/8-12	52x2	XELP 90 38S UNF



Ciśnienie wg PN	Rura [D] [mm]	Gwint [M]	Gwint [M2] po stronie rury	Oznaczenie XETP 90
L 315	6	10x1	12x1,5	XETP 90 6LM
	8	12x1,5	14x1,5	XETP 90 8LM
	10	14x1,5	16x1,5	XETP 90 10LM
	12	16x1,5	18x1,5	XETP 90 12LM
	15	18x1,5	22x1,5	XETP 90 15LM
	16	20x1,5	22x1,5	XETP 90 16LM
	18	22x1,5	26x1,5	XETP 90 18EL
	18	22x1,5	27x2	XETP 90 18LM 27x2
L 160	22	27x2	30x2	XETP 90 22LM
	28	33x2	36x2	XETP 90 28LM
	35	42x2	45x2	XETP 90 35LM
	42	48x2	52x2	XETP 90 42LM

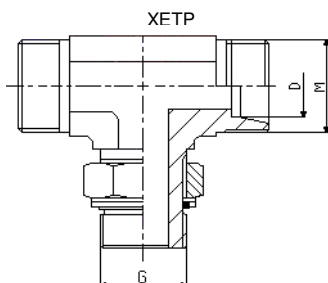
S PN 630	6	12x1,5	14x1,5	XETP 90 6SM
	8	14x1,5	16x1,5	XETP 90 8SM
	10	16x1,5	18x1,5	XETP 90 10SM
	12	18x1,5	20x1,5	XETP 90 12SM
	14	20x1,5	22x1,5	XETP 90 14SM
S PN 400	16	22x1,5	24x1,5	XETP 90 16SM
	20	27x2	30x2	XETP 90 20SM
	25	33x2	36x2	XETP 90 25SM
PN 315	30	42x2	42x2	XETP 90 30SM
	38	48x2	52x2	XETP 90 38SM

ELEMENTY ZŁĄCZNE WG DIN I PN



Ciśnienie wg PN	Rura [D] [mm]	Gwint [G]	Gwint [M] po stronie rury	Oznaczenie XETP 90
L 315	6	1/8	12x1,5	XETP 90 6LR
	8	1/4	14x1,5	XETP 90 8LR
	10	1/4	16x1,5	XETL 90 10LR
	12	3/8	18x1,5	XETP 90 12LR
	15	1/2	22x1,5	XETP 90 15LR
	16	1/2	22x1,5	XETP 90 16LR
	18	1/2	26x1,5	XETP 90 18LR
L 160	18	1/2	27x2	XETP 90 18LR27/1/2
	22	3/4	30x2	XETP 90 22LR
	28	1	36x2	XETP 90 28LR
	35	1 1/4	45x2	XETP 90 35LR
	42	1 1/2	52x2	XETP 90 42LR

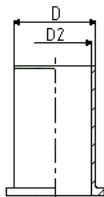
S PN 630	6	1/4	14x1,5	XETP 90 6SR
	8	1/4	16x1,5	XETP 90 8SR
	10	3/8	18x1,5	XETP 90 10EL
	12	3/8	20x1,5	XETP 90 12SR
	14	1/2	22x1,5	XETP 90 14SR
S PN 400	16	1/2	24x1,5	XETP 90 16SR
	20	3/4	30x2	XETP 90 20SR
	25	1	36x2	XETP 90 25SR
	30	1 1/4	42x2	XETP 90 30SR
PN 315	38	1 1/2	52x2	XETP 90 38SR



Ciśnienie wg PN	Rura [D] [mm]	Gwint [G]	Gwint [M] po stronie rury	Oznaczenie XETP 90
L 315	6	7/16-20	12x1,5	XETP 90 6L UNF
	8	7/16-20	14x1,5	XETP 90 8L UNF
	10	9/16-18	16x1,5	XETP 90 10L UNF
	12	3/4-16	18x1,5	XETP 90 12L UNF
	15	7/8-14	22x1,5	XETP 90 15L UNF
	18	7/8-14	26x1,5	XETP 90 18L UNF
L 160	22	1 1/16-12	30x2	XETP 90 22L UNF
	28	1 5/16-12	36x2	XETP 90 28L UNF
	35	1 5/8-12	45x2	XETP 90 35L UNF
	42	1 7/8-12	52x2	XETP 90 42L UNF

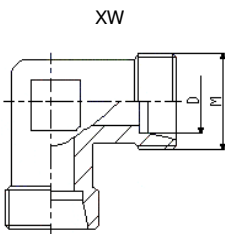
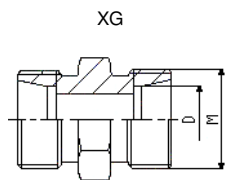
S PN 630	6	7/16-20	14x1,5	XETP 90 6S UNF
	8	9/16-18	16x1,5	XETP 90 8S UNF
	10	9/16-18	18x1,5	XETP 90 10S UNF
	12	3/4-16	20x1,5	XETP 90 12S UNF
	14	7/8-14	22x1,5	XETP 90 14S UNF
S PN 400	16	7/8-14	24x1,5	XETP 90 16S UNF
	20	1 1/16-12	30x2	XETP 90 20S UNF
	25	1 5/16-12	36x2	XETP 90 25S UNF
	30	1 5/8-12	42x2	XETP 90 30S UNF
PN 315	38	1 7/8-12	52x2	XETP 90 38S UNF

TULEJA WZMACNIAJĄCA



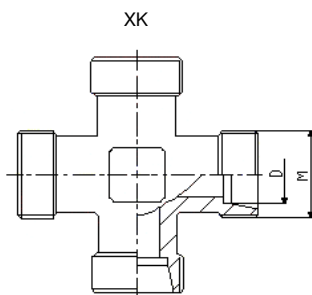
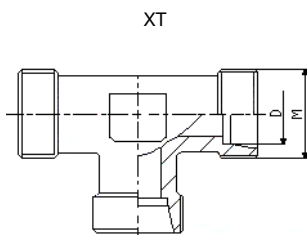
Rura [D] [mm]	[D2]	Oznaczenie Tuleja wzmacniająca
6	3,9	Tuleja wzmacniająca 6
8	5,9	Tuleja wzmacniająca 8
10	7,9	Tuleja wzmacniająca 10
12	9,9	Tuleja wzmacniająca 12
15	12,9	Tuleja wzmacniająca 15
18	14,9	Tuleja wzmacniająca 18
20	15,9	Tuleja wzmacniająca 20
22	17,9	Tuleja wzmacniająca 22
28	23,9	Tuleja wzmacniająca 28
30	25,9	Tuleja wzmacniająca 30
35	30,9	Tuleja wzmacniająca 35

ELEMENTY ZŁĄCZNE WG DIN i PN



Ciśnienie wg PN	Rura D [mm]	Gwint [M]	Oznaczenie XG	Oznaczenie XW
LL PN 100	4	8x1	XG 4LL	XW 4LL
	5	10x1	XG 5LL	XW 5LL
	6	10x1	XG 6LL	XW 6LL
	8	12x1	XG 8LL	XW 8LL
	10	14x1	XG 10LL	XW 10LL
L PN 400	12	16x1	XG 12LL	XW 12LL
	6	12x1,5	XG 6L	XW 6L
	8	14x1,5	XG 8L	XW 8L
	10	16x1,5	XG 10L	XW 10L
	12	18x1,5	XG 12L	XW 12L
	15	22x1,5	XG 15L	XW 15L
PN 315	16	22x1,5	XG 16L	XW 16L
	18	26x1,5	XG 18L	XW 18L
	18	27x2	XG 18L	XW 18L
PN 250	22	30x2	XG 22L	XW 22L
	28	36x2	XG 28L	XW 28L
	35	45x2	XG 35L	XW 35L
	42	52x2	XG 42L	XW 42L

S PN 630	6	14x1,5	XG 6S	XW 6S
	8	16x1,5	XG 8S	XW 8S
	10	18x1,5	XG 10S	XW 10S
	12	20x1,5	XG 12S	XW 12S
	14	22x1,5	XG 14S	XW 14S
PN 400	16	24x1,5	XG 16S	XW 16S
	20	30x2	XG 20S	XW 20S
	25	36x2	XG 25S	XW 25S
	30	42x2	XG 30S	XW 30S
PN 315	38	52x2	XG 38S	XW 38S

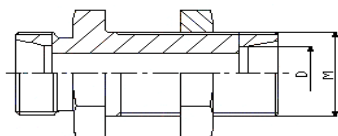


Ciśnienie wg PN	Rura D [mm]	Gwint [M]	Oznaczenie XT	Oznaczenie XK
LL PN 100	4	8x1	XT 4LL	XK 4LL
	5	10x1	XT 5LL	XK 5LL
	6	10x1	XT 6LL	XK 6LL
	8	12x1	XT 8LL	XK 8LL
	10	14x1	XT 10LL	XK 10LL
	12	16x1	XT 12LL	XK 12LL
L PN 400	6	12x1,5	XT 6L	XK 6L
	8	14x1,5	XT 8L	XK 8L
	10	16x1,5	XT 10L	XK 10L
	12	18x1,5	XT 12L	XK 12L
	15	22x1,5	XT 15L	XK 15L
	16	22x1,5	XT 16L	XK 16L
PN 315	18	26x1,5	XT 18L	XK 18L
	18	27x2	XT 18L	XK 18L
	22	30x2	XT 22L	XK 22L
PN 250	28	36x2	XT 28L	XK 28L
	35	45x2	XT 35L	XK 35L
	42	52x2	XT 42L	XK 42L

S PN 630	6	14x1,5	XT 6S	K 6S
	8	16x1,5	XT 8S	K 8S
	10	18x1,5	XT 10S	K 10S
	12	20x1,5	XT 12S	K 12S
	14	22x1,5	XT 14S	K 14S
PN 400	16	24x1,5	XT 16S	K 16S
	20	30x2	XT 20S	K 20S
	25	36x2	XT 25S	K 25S
	30	42x2	XT 30S	K 30S
PN 315	38	52x2	XT 38S	K 38S

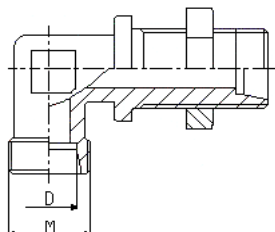
ELEMENTY ZŁĄCZNE WG DIN I PN

XSV



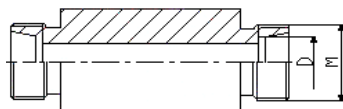
Ciśnienie wg PN	Rura D [mm]	Gwint [M]	Oznaczenie XSV	Oznaczenie XWSV
L PN 400	6	12x1,5	XSV 6L	XWSV 6L
	8	14x1,5	XSV 8L	XWSV 8L
	10	16x1,5	XSV 10L	XWSV 10L
	12	18x1,5	XSV 12L	XWSV 12L
	15	22x1,5	XSV 15L	XWSV 15L
PN 315	16	22x1,5	XSV16L	XWSL 16L
	18	26x1,5	XSV 18L	XWSV 18L
	18	27x2	XSV 18L	XWSV 18L
PN 250	22	30x2	XSV 22L	XWSV 22L
	28	36x2	XSV 28L	XWSV 28L
	35	45x2	XSV 35L	XWSV 35L
	42	52x2	XSV 42L	XWSV 42L

XWSV



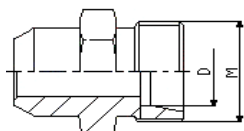
S PN 630	6	14x1,5	XSV 6S	XWSV 6S
	8	16x1,5	XSV 8S	XWSV 8S
	10	18x1,5	XSV 10S	XWSV 10S
	12	20x1,5	XSV 12S	XWSV 12S
	14	22x1,5	XSV 14S	XWSV 14S
PN 400	16	24x1,5	XSV 16S	XWSV 16S
	20	30x2	XSV 20S	XWSV 20S
	25	36x2	XSV 25S	XWSV 25S
	30	42x2	XSV 30S	XWSV 30S
PN 315	38	52x2	XSV 38S	XWSV 38S

XESV



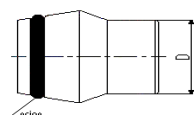
Ciśnienie wg PN	Rura D [mm]	Gwint [M]	Oznaczenie XESV	Oznaczenie XAS
L PN 400	6	12x1,5	XESV 6L	XAS 6L
	8	14x1,5	XESV 8L	XAS 8L
	10	16x1,5	XESV 10L	XAS 10L
	12	18x1,5	XESV 12L	XAS 12L
	15	22x1,5	XESV 15L	XAS 15L
PN 315	16	22x1,5	XESV 16L	XAS 16L
	18	26x1,5	XESV 18L	XAS 18L
	18	27x2	XESV 18L	XAS 18L
PN 250	22	30x2	XESV 22L	XAS 22L
	28	36x2	XESV 28L	XAS 28L
	35	45x2	XESV 35L	XAS 35L
	42	52x2	XESV 42L	XAS 42L

XAS



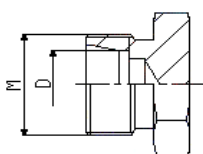
S PN 630	6	14x1,5	XESV 6S	XAS 6S
	8	16x1,5	XESV 8S	XAS 8S
	10	18x1,5	XESV 10S	XAS 10S
	12	20x1,5	XESV 12S	XAS 12S
	14	22x1,5	XESV 14S	XAS 14S
PN 400	16	24x1,5	XESV 16S	XAS 16S
	20	30x2	XESV 20S	XAS 20S
	25	36x2	XESV 25S	XAS 25S
	30	42x2	XESV 30S	XAS 30S
PN 315	38	52x2	XESV 38S	XAS 38S

VKA



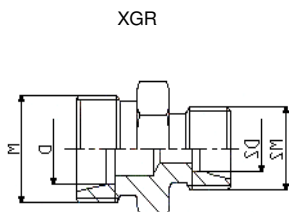
Ciśnienie wg PN	Rura D [mm]	Gwint [M]	Oznaczenie VKA	Oznaczenie XROV
L PN 400	6	12x1,5	VKA 6	XROV 6L
	8	14x1,5	VKA 8	XROV 8L
	10	16x1,5	VKA 10	XROV 10L
	12	18x1,5	VKA 12	XROV 12L
	15	22x1,5	VKA 15	XROV 15
PN 315	16	22x1,5	VKA 16	XROV 16L
	18	26x1,5	VKA 18	XROV 18L
	18	27x2	VKA 18	XROV 18L 27x2
PN 250	22	30x2	VKA 22	XROV 22L
	28	36x2	VKA 28	XROV 28L
	35	45x2	VKA 35	XROV 35L
	42	52x2	VKA 42	XROV 42L

XROV



S PN 630	6	14x1,5	VKA 6	XROV 6S
	8	16x1,5	VKA 8	XROV 8S
	10	18x1,5	VKA 10	XROV 10S
	12	20x1,5	VKA 12	XROV 12S
	14	22x1,5	VKA 14	XROV 14S
PN 400	16	24x1,5	VKA 16	XROV 16S
	20	30x2	VKA 20	XROV 20S
	25	36x2	VKA 25	XROV 25S
	30	42x2	VKA 30	XROV 30S
PN 315	38	52x2	VKA 38	XROV 38S

ELEMENTY ZŁĄCZNE WG DIN I PN



Ciśnienie wg PN	rura D1 [mm]	Gwint [M]	rura D2 [mm]	Gwint [M2]	Oznaczenie XGR	
LL PN 100	6	10x1	4	8x1	XGR 6-4LL	
	8	12x1	4	8x1	XGR 8-4LL	
	8	12x1	6	10x1	XGR 8-6LL	
L PN 315	8	14x1,5	6	12x1,5	XGR 8-6L	
	10	16x1,5	6	12x1,5	XGR 10-6L	
	10	16x1,5	8	14x1,5	XGR 10-8L	
	12	18x1,5	6	12x1,5	XGR 12-6L	
	12	18x1,5	8	14x1,5	XGR 12-8L	
	12	18x1,5	10	16x1,5	XGR 12-10L	
	15	22x1,5	6	12x1,5	XGR 15-6L	
	15	22x1,5	8	14x1,5	XGR 15-8L	
	15	22x1,5	10	16x1,5	XGR 15-10L	
	15	22x1,5	12	18x1,5	XGR 15-12L	
	18	26x1,5	6	12x1,5	XGR 18-6L	
	18	26x1,5	8	14x1,5	XGR 18-8L	
	18	26x1,5	10	16x1,5	XGR 18-10L	
	18	26x1,5	12	18x1,5	XGR 18-12L	
	18	26x1,5	15	22x1,5	XGR 18-15L	
	L 160	22	30x2	6	12x1,5	XGR 22-6L
		22	30x2	8	14x1,5	XGR 22-8L
		22	30x2	10	16x1,5	XGR 22-10L
22		30x2	12	18x1,5	XGR 22-12L	
22		30x2	15	22x1,5	XGR 22-15L	
22		30x2	18	26x1,5	XGR 22-18L	
28		36x2	6	12x1,5	XGR 28-6L	
28		36x2	8	14x1,5	XGR 28-8L	
28		36x2	10	16x1,5	XGR 28-10L	
28		36x2	12	18x1,5	XGR 28-12L	
28		36x2	15	22x1,5	XGR 28-15L	
28		36x2	18	26x1,5	XGR 28-18L	
28		36x2	22	30x2	XGR 28-22L	
35		45x2	6	12x1,5	XGR 35-6L	
35		45x2	8	14x1,5	XGR 35-8L	
35		45x2	10	16x1,5	XGR 35-10L	
35		45x2	12	18x1,5	XGR 35-12L	
35		45x2	15	22x1,5	XGR 35-15L	
35		45x2	18	26x1,5	XGR 35-18L	
35		45x2	22	30x2	XGR 35-22L	
35		45x2	28	36x2	XGR 35-28L	
42		52x2	6	12x1,5	XGR 42-6L	
42		52x2	8	14x1,5	XGR 42-8L	
42		52x2	10	16x1,5	XGR 42-10L	
42		52x2	12	18x1,5	XGR 42-12L	
42		52x2	15	22x1,5	XGR 42-15L	
42		52x2	18	26x1,5	XGR 42-18L	
42		52x2	22	30x2	XGR 42-22L	
42		52x2	28	36x2	XGR 42-28L	
42		52x2	35	45x2	XGR 42-35L	
S PN 630	8	16x1,5	6	14x1,5	XGR 8-6S	
	10	18x1,5	6	14x1,5	XGR 10-6S	
	10	18x1,5	8	16x1,5	XGR 10-8S	
	12	20x1,5	6	14x1,5	XGR 12-6S	
	12	20x1,5	8	16x1,5	XGR 12-8S	
	12	20x1,5	10	18x1,5	XGR 12-10S	
	14	20x1,5	6	14x1,5	XGR 14-6S	
	14	20x1,5	8	16x1,5	XGR 14-8S	
	14	22x1,5	10	18x1,5	XGR 14-10S	
	14	22x1,5	12	20x1,5	XGR 14-12S	
	S PN 400	16	24x1,5	6	14x1,5	XGR 16-6S
		16	24x1,5	8	16x1,5	XGR 16-8S
16		24x1,5	10	18x1,5	XGR 16-10S	
16		24x1,5	12	20x1,5	XGR 16-12S	
16		24x1,5	14	22x1,5	XGR 16-14S	
20		30x2	6	14x1,5	XGR 20-6S	
20		30x2	8	16x1,5	XGR 20-8S	
20		30x2	10	18x1,5	XGR 20-10S	
20		30x2	12	20x1,5	XGR 20-12S	
20		30x2	14	22x1,5	XGR 20-14S	
20		30x2	16	24x1,5	XGR 20-16S	
25		36x2	6	14x1,5	XGR 25-6S	
25		36x2	8	16x1,5	XGR 25-8S	
25		36x2	10	18x1,5	XGR 25-10S	
25		36x2	12	20x1,5	XGR 25-12S	
25		36x2	14	22x1,5	XGR 25-14S	
25		36x2	16	24x1,5	XGR 25-16S	
25		36x2	20	30x2	XGR 25-20S	

CIĄG DALSZY NA NASTĘPNEJ STRONIE

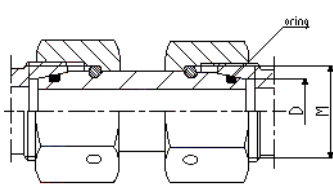
ELEMENTY ZŁĄCZNE WG DIN I PN

XGR



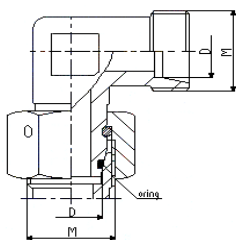
Ciśnienie wg PN	rura D1 [mm]	Gwint [M]	rura D2 [mm]	Gwint [M2]	Oznaczenie XGR
PN 400	30	42x2	6	14x1,5	XGR 30-6S
	30	42x2	8	16x1,5	XGR 30-8S
	30	42x2	10	18x1,5	XGR 30-10S
	30	42x2	12	20x1,5	XGR 30-12S
	30	42x2	14	22x1,5	XGR 30-14S
	30	42x2	16	24x1,5	XGR 30-16S
	30	42X2	20	30x2	XGR 30-20S
	30	42X2	25	36x2	XGR 30-25S
PN 315	38	52x2	6	14x1,5	XGR 30-6S
	38	52x2	8	16x1,5	XGR 30-8S
	38	52x2	10	18x1,5	XGR 30-10S
	38	52x2	12	20x1,5	XGR 30-12S
	38	52x2	14	22x1,5	XGR 30-14S
	38	52x2	16	24x1,5	XGR 30-16S
	38	52x2	20	30x2	XGR 30-20S
	38	52x2	25	36x2	XGR 30-25S
	38	52x2	30	42X2	XGR 38-30S

GZ



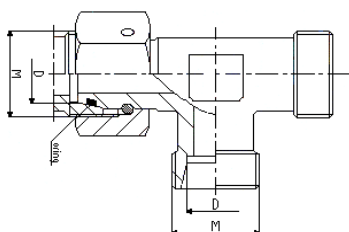
Ciśnienie wg PN	Rura [mm]	Gwint [M]	Gwint [D] po stronie rury	Oznaczenie GZ	Oznaczenie XEW
L PN 315	6	12x1,5	12x1,5	GZ 6L	XEW 6L
	8	14x1,5	14x1,5	GZ 8L	XEW 8L
	10	16x1,5	16x1,5	GZ 10L	XEW 10L
	12	18x1,5	18x1,5	GZ 12L	XEW 12L
	15	22x1,5	22x1,5	GZ 15L	XEW 15L
	16	22x1,5	22x1,5	GZ 16L	XEW 16L
	18	26x1,5	26x1,5	GZ 18L	XEW 18L
	18	27x2	27x2	GZ 18L 27x2	XEW 18L 27x2
L PN 160	22	30x2	30x2	GZ 22L	XEW 22L
	28	36x2	36x2	GZ 28L	XEW 28L
	35	45x2	45x2	GZ 35L	XEW 35L
	42	52x2	52x2	GZ 42L	XEW 42L

XEW



S PN 630	6	14x1,5	14x1,5	GZ 6S	EW 6S
	8	16x1,5	16x1,5	GZ 8S	EW 8S
	10	18x1,5	18x1,5	GZ 10S	EW 10S
	12	20x1,5	20x1,5	GZ 12S	EW 12S
	14	22x1,5	22x1,5	GZ 14S	EW 14S
S PN 400	16	24x1,5	24x1,5	GZ 16S	EW 16S
	20	30x2	30x2	GZ 20S	EW 20S
	25	36x2	36x2	GZ 25S	EW 25S
PN 315	30	42x2	42x2	GZ 30S	EW 30S
	38	52x2	52x2	GZ 38S	EW 38S

XEL

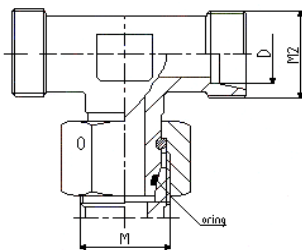


Ciśnienie wg PN	Rura [mm]	Gwint [M]	Gwint [D] po stronie rury	Oznaczenie XEL	Oznaczenie XEVL
L PN 315	6	12x1,5	12x1,5	XEL 6L	XEVL 6L
	8	14x1,5	14x1,5	XEL 8L	XEVL 8L
	10	16x1,5	16x1,5	XEL 10L	XEVL 10L
	12	18x1,5	18x1,5	XEL 12L	XEVL 12L
	15	22x1,5	22x1,5	XEL 15L	XEVL 15L
	16	22x1,5	22x1,5	XEL 16L	XEVL 16L
	18	26x1,5	26x1,5	XEL 18L	XEVL 18L
	18	27x2	27x2	XEL 18L 27x2	XEVL 18L 27x2
L PN 160	22	30x2	30x2	XEL 22L	XEVL 22L
	28	36x2	36x2	XEL 28L	XEVL 28L
	35	45x2	45x2	XEL 35L	XEVL 35L
	42	52x2	52x2	XEL 42L	XEVL 42L

S PN 630	6	14x1,5	14x1,5	XEL 6S	XEVL 6S
	8	16x1,5	16x1,5	XEL 8S	XEVL 8S
	10	18x1,5	18x1,5	XEL 10S	XEVL 10S
	12	20x1,5	20x1,5	XEL 12S	XEVL 12S
	14	22x1,5	22x1,5	XEL 14S	XEVL 14S
S PN 400	16	24x1,5	24x1,5	XEL 16S	XEVL 16S
	20	30x2	30x2	XEL 20S	XEVL 20S
	25	36x2	36x2	XEL 25S	XEVL 25S
PN 315	30	42x2	42x2	XEL 30S	XEVL 30S
	38	52x2	52x2	XEL 38S	XEVL 38S

ELEMENTY ZŁĄCZNE WG DIN I PN

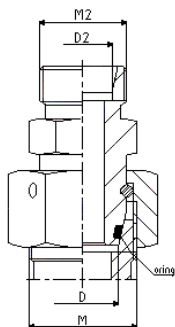
XET



Ciśnienie wg PN	Rura [mm]	Gwint [M]	Gwint [D] po stronie rury	Oznaczenie XET
L PN 315	6	12x1,5	12x1,5	XET 6L
	8	14x1,5	14x1,5	XET 8L
	10	16x1,5	16x1,5	XET 10L
	12	18x1,5	18x1,5	XET 12L
	15	22x1,5	22x1,5	XET 15L
	16	22x1,5	22x1,5	XET 16L
	18	26x1,5	26x1,5	XET 18L
L PN 160	27x2	27x2	27x2	XET 18L 27x2
	22	30x2	30x2	XET 22L
	28	36x2	36x2	XET 28L
	35	45x2	45x2	XET 35L
	42	52x2	52x2	XET 42L

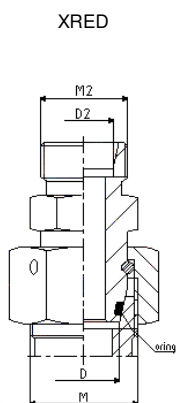
S PN 630	6	14x1,5	14x1,5	XET 6S
	8	16x1,5	16x1,5	XET 8S
	10	18x1,5	18x1,5	XET 10S
	12	20x1,5	20x1,5	XET 12S
	14	22x1,5	22x1,5	XET 14S
S PN 400	16	24x1,5	24x1,5	XET 16S
	20	30x2	30x2	XET 20S
	25	36x2	36x2	XET 25S
	30	42x2	42x2	XET 30S
PN 315	38	52x2	52x2	XET 38S

XRED



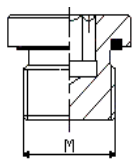
Ciśnienie wg PN	D [mm]	Gwint d1 [M]	D2 [mm]	Gwint [M2]	Oznaczenie XRED
L PN 315	8	14x1,5	6	12x1,5	XRED 8-6L
	10	16x1,5	6	12x1,5	XRED 10-6L
	10	16x1,5	8	14x1,5	XRED 10-8L
	12	18x1,5	6	12x1,5	XRED 12-6L
	12	18x1,5	8	14x1,5	XRED 12-8L
	12	18x1,5	10	16x1,5	XRED 12-10L
	15	22x1,5	6	12x1,5	XRED 15-6L
	15	22x1,5	8	14x1,5	XRED 15-8L
	15	22x1,5	10	16x1,5	XRED 15-10L
	15	22x1,5	12	18x1,5	XRED 15-12L
	18	26x1,5	6	12x1,5	XRED 18-6L
	18	26x1,5	8	14x1,5	XRED 18-8L
	18	26x1,5	10	16x1,5	XRED 18-10L
	18	26x1,5	12	18x1,5	XRED 18-12L
	18	26x1,5	15	22x1,5	XRED 18-15L
	18	27x2	6	12x1,5	XRED18-6L27
	18	27x2	8	14x1,5	XRED 18-8L27
	L PN 160	18	27x2	10	16x1,5
18		27x2	12	18x1,5	XRED 18-12L27
18		27x2	15	22x1,5	XRED 18-15L27
22		30x2	6	12x1,5	XRED 22-6L
22		30x2	8	14x1,5	XRED 22-8L
22		30x2	10	16x1,5	XRED 22-10L
22		30x2	12	18x1,5	XRED 22-12L
22		30x2	15	22x1,5	XRED 22-15L
22		30x2	18	26x1,5	XRED 22-18L
28		36x2	6	12x1,5	XRED 28-6L
28		36x2	8	14x1,5	XRED 28-8L
28		36x2	10	16x1,5	XRED 28-10L
28		36x2	12	18x1,5	XRED 28-12L
28		36x2	15	22x1,5	XRED 28-15L
28		36x2	18	26x1,5	XRED 28-18L
28		36x2	22	30x2	XRED 28-22L
35		45x2	6	12x1,5	XRED 35-6L
35		45x2	8	14x1,5	XRED 35-8L
35		45x2	10	16x1,5	XRED 35-10L
35		45x2	12	18x1,5	XRED 35-12L
35		45x2	15	22x1,5	XRED 35-15L
35		45x2	18	26x1,5	XRED 35-18L
35		45x2	22	30x2	XRED 35-22L
35		45x2	28	36x2	XRED 35-28L
42		52x2	6	12x1,5	XRED 42-6L
42		52x2	8	14x1,5	XRED 42-8L
42		52x2	10	16x1,5	XRED 42-10L
42		52x2	12	18x1,5	XRED 42-12L
42		52x2	15	22x1,5	XRED 42-15L
42		52x2	18	26x1,5	XRED 42-18L
42	52x2	22	30x2	XRED 42-22L	
42	52x2	28	36x2	XRED 42-28L	
42	52x2	35	45x2	XRED 42-35L	

ELEMENTY ZŁĄCZNE WG DIN I PN

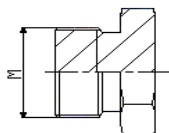


Ciśnienie wg PN	D1 [mm]	Gwint [M]	rura D2 [mm]	Gwint [M2]	Oznaczenie XRED
S PN 630	8	16x1,5	6	14x1,5	XRED 8-6S
	10	18x1,5	6	14x1,5	XRED 10-6S
	10	18x1,5	8	16x1,5	XRED 10-8S
	12	20x1,5	6	14x1,5	XRED 12-6S
	12	20x1,5	8	16x1,5	XRED 12-8S
	12	20x1,5	10	18x1,5	XRED 12-10S
	14	22x1,5	6	14x1,5	XRED 14-6S
	14	22x1,5	8	16x1,5	XRED 14-8S
	14	22x1,5	10	18x1,5	XRED 14-10S
S PN 400	14	22x1,5	12	20x1,5	XRED 14-12S
	16	24x1,5	6	14x1,5	XRED 16-6S
	16	24x1,5	8	16x1,5	XRED 16-8S
	16	24x1,5	10	18x1,5	XRED 16-10S
	16	24x1,5	12	20x1,5	XRED 16-12S
	16	24x1,5	14	22x1,5	XRED 16-14S
	20	30x2	6	14x1,5	XRED 20-6S
	20	30x2	8	16x1,5	XRED 20-8S
	20	30x2	10	18x1,5	XRED 20-10S
	20	30x2	12	20x1,5	XRED 20-12S
	20	30x2	14	22x1,5	XRED 20-14S
	20	30x2	16	24x1,5	XRED 20-16S
	25	36x2	6	14x1,5	XRED 25-6S
	25	36x2	8	16x1,5	XRED 25-8S
	25	36x2	10	18x1,5	XRED 25-10S
	25	36x2	12	20x1,5	XRED 25-12S
	25	36x2	14	22x1,5	XRED 25-14S
	25	36x2	16	24x1,5	XRED 25-16S
	25	36x2	20	30x2	XRED 25-20S
	30	42x2	6	14x1,5	XRED 30-6S
	30	42x2	8	16x1,5	XRED 30-8S
	30	42x2	10	18x1,5	XRED 30-10S
	30	42x2	12	20x1,5	XRED 30-12S
	30	42x2	14	22x1,5	XRED 30-14S
30	42x2	16	24x1,5	XRED 30-16S	
30	42x2	20	30x2	XRED 30-20S	
30	42x2	25	36x2	XRED 30-25S	
S PN 315	38	52x2	6	14x1,5	XRED 38-6S
	38	52x2	8	16x1,5	XRED 38-8S
	38	52x2	10	18x1,5	XRED 38-10S
	38	52x2	12	20x1,5	XRED 38-12S
	38	52x2	14	22x1,5	XRED 38-14S
	38	52x2	16	24x1,5	XRED 38-16S
	38	52x2	20	30x2	XRED 38-20S
	38	52x2	25	36x2	XRED 38-25S
	38	52x2	30	42x2	XRED 38-30S

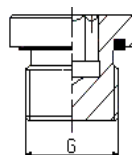
VSTI



KOREK



VSTI

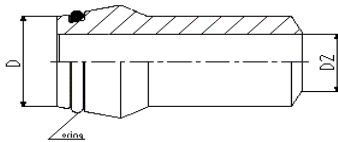


Ciśnienie wg PN	D [mm]	Gwint [M]	Oznaczenie VSTI-ED	Oznaczenie KOREK
PN 400		8x1		KOREK 8x1
	14	10x1	VSTI 10x1	KOREK 10x1
	17	12x1,5	VSTI 12x1,5	KOREK 12x1,5
	19	14x1,5	VSTI 14x1,5	KOREK 14x1,5
	22	16x1,5	VSTI 16x1,5	KOREK 16x1,5
	24	18x1,5	VSTI 18x1,5	KOREK 18x1,5
	26	20x1,5	VSTI 20x1,5	KOREK 20x1,5
	27	22x1,5	VSTI 22x1,5	KOREK 22x1,5
		24x1,5		KOREK 24x1,5
	32	26x1,5	VSTI 26x1,5	KOREK 26x1,5
	32	27x2	VSTI 27x2	KOREK 27x2
		30x2		KOREK 30x2
		33x2	VSTI 33x2	KOREK 33x2
		36x2		KOREK 36x2
PN 250		39x2		KOREK 39x2
	50	42x2	VSTI 42x2	KOREK 42x2
		45x2		KOREK 45x2
	55	48x2	VSTI 48x2	KOREK 48x2

Ciśnienie wg PN	D [mm]	Gwint [G]	Oznaczenie VSTI-ED R
PN 400	14	1/8	VSTI 1/8
	19	1/4	VSTI 1/4
	22	3/8	VSTI 3/8
	27	1/2	VSTI 1/2
	32	3/4	VSTI 3/4
PN 250	40	1	VSTI 1
	50	1 1/4	VSTI 1 1/4
	55	1 1/2	VSTI 1 1/2

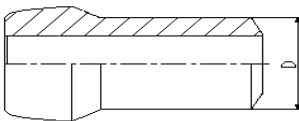
ELEMENTY ZŁĄCZNE WG DIN i PN

SKA



Ciśnienie wg PN	Rura [D]	Rura [D2]	Oznaczenie SKA
PN	6	2,5	SKA 6L/S
630	8	4	SKA 8L/S
315	10	7	SKA 10L/S 10x1,5
400	10	6	SKA 10L/S 10x2
315	12	9	SKA 12L/S 12x1,5
400	12	8	SKA 12L/S 12x2
630	12	7	SKA 12L/S 12x2,5
PN	15	10	SKA 15L
315	18	13	SKA 18L
	22	17	SKA 22L
PN	28	23	SKA 28L
160	35	29	SKA 35L
	42	36	SKA 42L
400	14	8	SKA 14S
250	16	12	SKA 16L/S 16x2
315	16	11	SKA 16L/S 16x2,5
400	16	10	SKA 16L/S 16x3
250	20	15	SKA 20S 20x2,5
315	20	14	SKA 20S 20x3
400	20	12	SKA 20S 20x4
250	25	19	SKA 25S 25x3
315	25	17	SKA 25S 25x4
400	25	15	SKA 25S 25x5
160	30	24	SKA 30S 30x3
250	30	22	SKA 30S 30x4
PN	30	20	SKA 30S 30x5
315	30	18	SKA 30S 30x6
160	38	32	SKA 38S 38x3
250	38	28	SKA 38S 38x5
PN	38	26	SKA 38S 38x6
315	38	22	SKA 38S 38x8

KOŃCÓWKA KULISTA



Ciśnienie wg PN	Rura [D]	Oznaczenie Końcówka kulista
PN 630	6	Końcówka kulista 6L/S
	8	Końcówka kulista 8L/S
	10	Końcówka kulista 10L/S
	12	Końcówka kulista 12L/S
	14	Końcówka kulista 14S
315	15	Końcówka kulista 15L
400	16	Końcówka kulista 16L/S
315	18	Końcówka kulista 18L
400	20	Końcówka kulista 20S
160	22	Końcówka kulista 22L
400	25	Końcówka kulista 25S
160	28	Końcówka kulista 28L
400	30	Końcówka kulista 30S
160	35	Końcówka kulista 35L
315	38	Końcówka kulista 38S
160	42	Końcówka kulista 42L

