

## ELEMENTY SZYBKOZŁĄCZY ZE STOPÓW "AL"

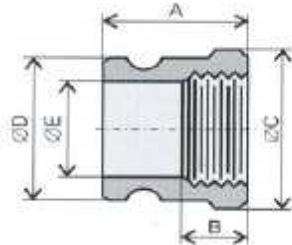
Szybkozłącza niskociśnieniowe wykonane są ze stopów aluminium, miedzi lub ze stali nierdzewnej.

ZASTOSOWANIE: w przemyśle paliwowym, maszynowym, elektrotechnicznym, pożarnictwie i transporcie kolejowym.

Modele: A, B, C, D, E, F, DC, DP, produkowane są w wymiarach maksymalnie do 6" (150mm).

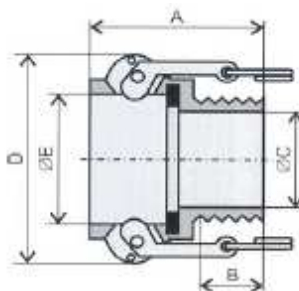
Modele: AR, BR, CR, produkowane są w wymiarach maksymalnie do 4" (100mm).

### MODEL A



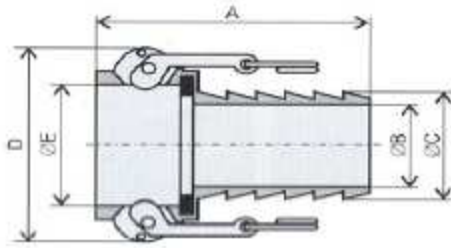
ROZMIAR											
mm	13	19	25	32	40	50	63	75	100	125	150
cal	1/2"	3/4"	1"	1 1/4"	1 1/2"	2"	2 1/2"	3"	4"	5"	6"
MODEL A											
A		38	48	54	56	62	70	76	79	84	91
B		14	19	21	22	25	21	34	438	32	40
C		33	40	50	56	68	84	96	125	151	181
D		32	37	45	53	63	76	91	120	145	176
E		20	22	27	35	44	59	72	100	122	150

### MODEL B



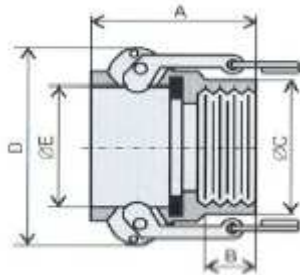
ROZMIAR											
mm	13	19	25	32	40	50	63	75	100	125	150
cal	1/2"	3/4"	1"	1 1/4"	1 1/2"	2"	2 1/2"	3"	4"	5"	6"
MODEL B											
A		53	63	73	73	78	88	90	98	101	126
B		17	19	24	22	23	25	29	33	33	51
C		17	23	33	35	48	60	75	100	120	150
D		63	70	76	88	103	117	137	166	190	235
E		32	37	46	54	64	76	92	120	146	176

## MODEL C



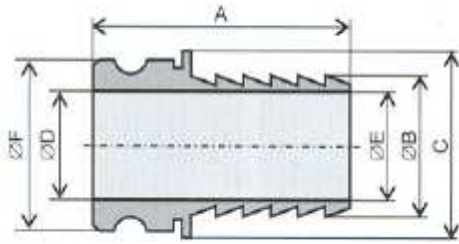
ROZMIAR											
mm	13	19	25	32	40	50	63	75	100	125	150
cal	1/2"	3/4"	1"	1 1/4"	1 1/2"	2"	2 1/2"	3"	4"	5"	6"
MODEL C											
A	67	83	100	107	117	135	139	160	167	196	212
B	7	12	18	23	29	41	53	66	88	113	136
C	15	21	26	33	39	52	66	78	104	130	155
D	63	63	70	76	88	103	117	137	163	190	232
E	32	32	37	46	54	64	76,5	92	120	146	176

## MODEL D



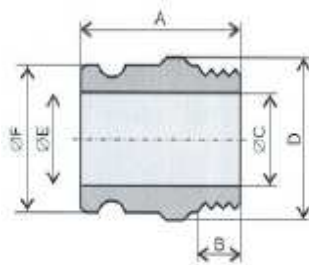
ROZMIAR											
mm	13	19	25	32	40	50	63	75	100	125	150
cal	1/2"	3/4"	1"	1 1/4"	1 1/2"	2"	2 1/2"	3"	4"	5"	6"
MODEL D											
A		51	63	65	75	76	86	88	91	93	113
B		15	19	17	24	20	25	26	27	34	38
C		33	38	52	57	67	84	95	125	153	180
D		62	72	80	87	103	117	137	171	190	234
E		32	37	46	54	64	76	92	120	146	176

## MODEL E



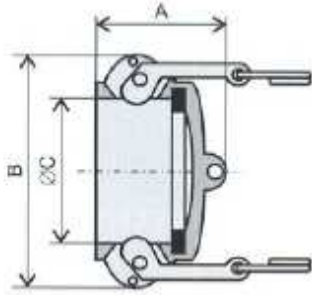
ROZMIAR											
mm	13	19	25	32	40	50	63	75	100	125	150
cal	1/2"	3/4"	1"	1 1/4"	1 1/2"	2"	2 1/2"	3"	4"	5"	6"
MODEL E											
A		79	106	116	123	144	148	169	175	200	220
B		21	26	33	39	52	66	78	104	129	155
C			44	52	64	69	86	100	128	150	187
D		19	24	29	37	47	56	73	99	126	152
E		13	18	24	29	41	53	66	90	115	139
F		32	37	45	53	63	76	91	119	142	176

## MODEL F



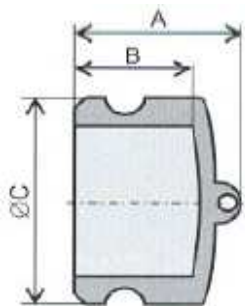
ROZMIAR											
mm	13	19	25	32	40	50	63	75	100	125	150
cal	1/2"	3/4"	1"	1 1/4"	1 1/2"	2"	2 1/2"	3"	4"	5"	6"
MODEL F											
A		60	72	82	84	91	97	102	110	109	137
B		16	19	22	20	24	24	29	26	36	39
C		16	22	27	34	44	55	71	98	125	145
D		33	39	49	57	66	82	93	121	150	182
E		21	25	29	36	46	57	73	101	125	150
F		32	37	45	53	63	76	91	119	145	176

## MODEL DC



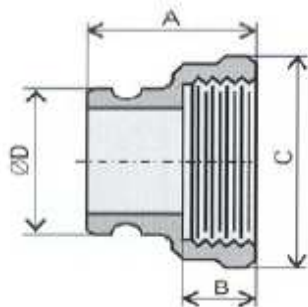
ROZMIAR											
mm	13	19	25	32	40	50	63	75	100	125	150
cal	1/2"	3/4"	1"	1 1/4"	1 1/2"	2"	2 1/2"	3"	4"	5"	6"
MODEL DC											
A		42	50	56	60	67	70	72	76	78	94
B		63	76	76	87	106	112	136	163	190	235
C		32	37	46	54	64	76	92	120	146	176

## MODEL DP



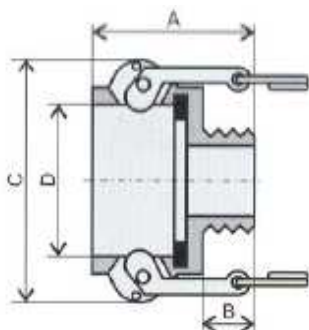
ROZMIAR											
mm	13	19	25	32	40	50	63	75	100	125	150
cal	1/2"	3/4"	1"	1 1/4"	1 1/2"	2"	2 1/2"	3"	4"	5"	6"
MODEL DP											
A		33	47	56	59	64	65	66	70	83	88
B		25	35	43	43	48	50	51	54	57	60
C		32	36	45	53	64	76	91	119	145	176

## MODEL AR



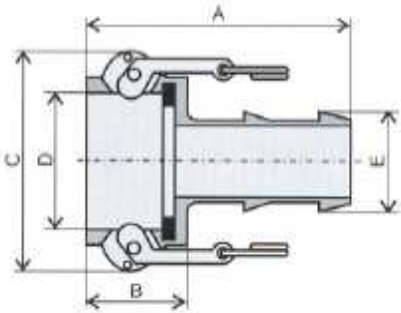
ROZMIAR				
mm	50 / 75	75 / 50	75 / 100	100 / 75
cal	2" / 3"	3" / 2"	3" / 4"	4" / 3"
MODEL AR				
A	80	70	101	90
B	23	23	23	30
C	85	75 / 50	127	97
D	63	91	91	119

## MODEL BR



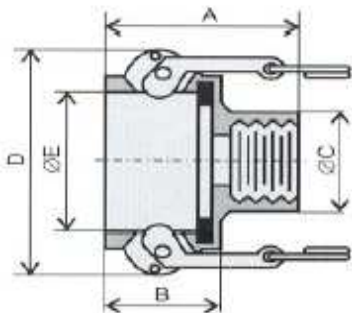
ROZMIAR				
mm	50 / 75	75 / 50	75 / 100	100 / 75
cal	2" / 3"	3" / 2"	3" / 4"	4" / 3"
MODEL BR				
A	81	102	151	145
B	20	24	30	29
C	103	137	136	164
D	64	92	92	119

## MODEL CR



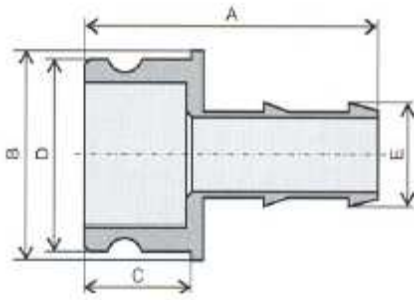
ROZMIAR		
mm	75 / 100	100 / 75
cal	3" / 4"	4" / 3"
<b>MODEL CR</b>		
<b>A</b>	<b>144</b>	<b>194</b>
<b>B</b>	<b>58</b>	<b>60</b>
<b>C</b>	<b>136</b>	<b>163</b>
<b>D</b>	<b>92</b>	<b>120</b>
<b>E</b>	<b>52</b>	<b>76</b>

## MODEL DR



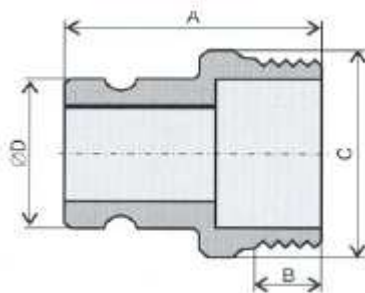
ROZMIAR		
mm	75 / 100	100 / 75
cal	3" / 4"	4" / 3"
<b>MODEL DR</b>		
<b>A</b>	<b>86</b>	<b>92</b>
<b>B</b>	<b>72</b>	<b>101</b>
<b>C</b>	<b>72</b>	<b>100</b>
<b>D</b>	<b>137</b>	<b>163</b>
<b>E</b>	<b>92</b>	<b>120</b>

## MODEL ER



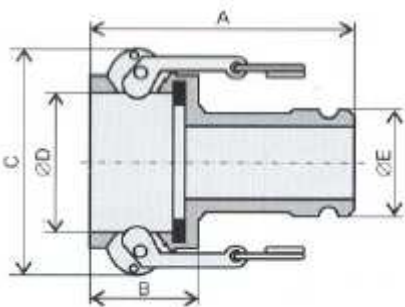
ROZMIAR	
mm	100 / 75
cal	4" / 3"
MODEL ER	
A	169
B	103
C	51
D	120
E	75

## MODEL FR



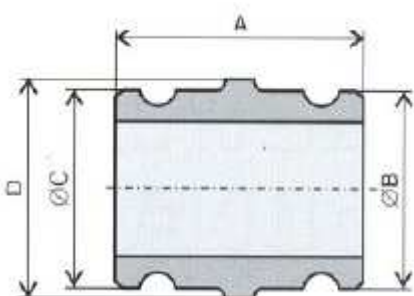
ROZMIAR				
mm	75 / 38	75 / 50	75 / 100	100 / 75
cal	3" / 1,5"	3" / 2"	3" / 4"	4" / 3"
MODEL FR				
A	93	96	101	108
B	23	25	27	28
C	70	63	118	123
D	91	91	91	120

## MODEL DA



ROZMIAR				
mm	75 / 38	75 / 50	75 / 100	100 / 75
cal	3" / 1,5"	3" / 2"	3" / 4"	4" / 3"
MODEL DA				
A	164	164	177	180
B	56	60	57	60
C	103	143	136	164
D	63	92	92	120
E	91	63	120	92

## MODEL SA

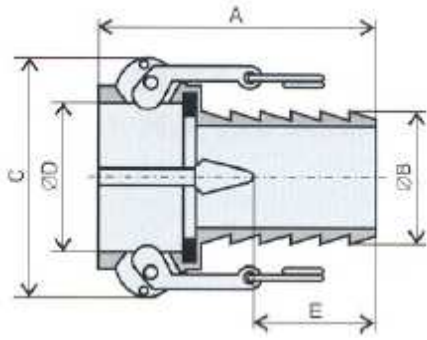


ROZMIAR					
mm	38 / 38	38 / 50	50 / 50	50 / 75	75 / 75
cal	1,5" / 1,5"	1,5" / 2"	2" / 2"	2" / 3"	3" / 3"
MODEL SA					
A	97	91	112	116	125
B	53	53	63	91	91
C	53	63	63	63	91
D	58		67		95

ROZMIAR			
mm	75 / 100	100 / 100	100 / 150
cal	3" / 4"	4" / 4"	4" / 6"
MODEL SA			
A	121	133	144
B	91	120	120
C	120	120	176
D		123	

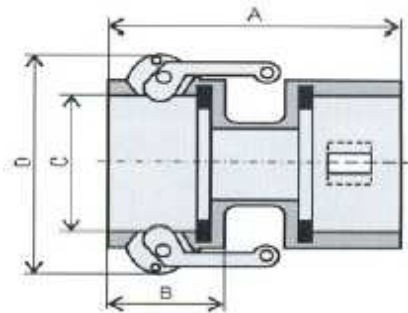


## MODEL CVR

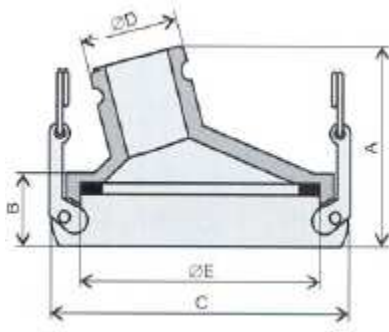


ROZMIAR			
mm	75 / 75	100 / 100	100 / 75
cal	3" / 3"	4" / 4"	4" / 3"
MODEL CVR			
A	162	178	165
B	79	104	79
C	136	163	163
D	92	120	120
E	75	75	75

## MODEL DD



ROZMIAR			
mm	75 / 75	100 / 100	100 / 75
cal	3" / 3"	4" / 4"	4" / 3"
MODEL DD			
A	162	178	165
B	79	104	79
C	136	163	163
D	92	120	120
E	75	75	75



ROZMIAR	
mm	75 / 100
cal	3" / 4"
MODEL OLS	
A	144
B	50
C	198
D	92
E	166